



**Huskie**  
**TOOLS**

Precision Hydraulic Compression & Cutting Tools

*When it's on the line,  
you count on Huskie Tools.*



Volume 8

[www.huskietools.com](http://www.huskietools.com)







**Huskie**  
**TOOLS**

**Follow Us:**



@huskietoolsinc



linkedin.com/company/huskie-tools



youtube.com/user/huskiertools



facebook.com/huskiertools

# Table of Contents

## Battery Operated Tools

SL-ND	6 Ton Streamline Crimping Tool with Changeable Head	13
SL-630	6.2 Ton Streamline Dieless Crimping Tool	14
SL-750	6.2 Ton Streamline Dieless Crimping Tool	15
SL-CB	Streamline Cable Bending Tool	16
SL-S20	6 Ton Streamline Cutting Tool	17
ECO-EZ	6 Ton Compression Tool with Changeable Head	18
REC-558U	6 Ton Compression Tool	21
REC-5NDSL	6 Ton Compression Tool with Changeable Head	22
REC-CN558	6 Ton Compression Tool	23
REC-5630	6.2 Ton Dieless Compression Tool	24
REC-5750	6.2 Ton Flip-Top Dieless Compression Tool	25
REC-3410	12 Ton Compression Tool	26
REC-5430	12 Ton Compression Tool	27
REC-3510	12 Ton Compression Tool	28
REC-5510	12 Ton Compression Tool	29
REC-3510K	12 Ton Compression Tool	30
REC-5510K	12 Ton Compression Tool	31
REC-3610	15 Ton Compression Tool	32
REC-SB	Shear Bolt Wrench	33
REC-530Y	6.6 Ton Cutting Tool	34
REC-534YC	6.6 Ton Cutting Tool	35
REC-560YC	6.6 Ton Scissor-Type Cutting Tool	36
REC-585YC	9 Ton Scissor-Type Cutting Tool	37
REC-50U	Gear-Driven Cable Cutter	38
REC-54ACM	Gear-Driven Cable Cutter	39
REC-54M	Gear-Driven Cable Cutter with Notched Blade	40
REC-Y33	Gear-Driven Scissor Cutter	41
REC-S520	6.6 Ton Battery Powered Cutter	42
REC-S524H	8 Ton Battery Powered Cutter	43
REC-S524CC	8 Ton Cutting Tool	44
REC-S540	8 Ton Cutting Tool	45
REC-S3550	13 Ton Cutting Tool	46
REC-P1	10,000 psi Battery Powered 28.8 Volt Pump	47

## Hydraulic Compression Tools

CN-258	6 Ton Compression Tool	53
EP-630A	6.2 Ton Dieless Crimping Tool	53
EP-750A	6.2 Ton Flip-Top Dieless Crimping Tool	54
EP-410	12 Ton Compression Tool with Rubber Boot	54
EP-430	12 Ton Compression Tool with Rubber Boot	55
EP-510C	12 Ton Compression Tool with Rubber Boot	55
EP-510K	12 Ton Compression Tool with Rubber Boot	56

CN-58H	6 Ton Remote Compression C-Head	56
EP-630HA	6.2 Ton Dieless Remote Crimping Head	57
EP-750HA	6.2 Ton Flip-Top Dieless Remote Crimping Head	57
EP-410H	12 Ton Remote Compression C-Head	58
EP-410HT	12 Ton Remote Titanium Compression C-Head	58
EP-430H	12 Ton Remote Compression C-Head	59
EP-510HC	12 Ton Remote Compression C-Head	59
EP-510HK	12 Ton Remote Compression C-Head	60
EP-610H	15 Ton Remote Compression C-Head	60
EP-60W (Steel), EP-60WT (Titanium)	60 Ton Compression Head	61
EP-60D (Steel), EP-60DT (Titanium)	60 Ton Double Acting Compression Head	62
EP-100WC	100 and 200 Ton Compression Head	63
HT58-SERIES	4-6 Ton "W" Style Dies	64
HT-SERIES	4-6 Ton "O" Style Dies	64
HT41-SERIES	12 Ton "U" Style Dies	65
HTK-SERIES	10.7-12 Ton "WH-2" and "WH-3" Style Dies	66
HT61-SERIES	15 Ton "P" Style Dies	66
HA60-SERIES	60 Ton Dies	67
HA100-SERIES	100 Ton Dies	67
Huskie Tools Die Chart		68
Wire Rope Dies	12 Ton "U" Type Compression Dies	69
HTK-CASE, DIE-CASE & W-CASE	Die Cases	69
Gauges		70

## Hydraulic & Manual Cutting Tools

RI-500	Ratchet Cable Cutter	73
R-750C	Ratchet Cable Cutter	73
S-SERIES	Handheld Hydraulic Cutters	75
SP-SERIES	Hydraulic Operated Remote Cutting Heads	77
YSP-Series	Scissor Cutter Remote Heads	78
DA-12	Hydraulic Low Pressure 4" Cable Cutter	79
AS-025 & AS-118	Cable Stripper for Semi-con and Secondary	80
NP-400	Insulation Stripper	80

## Hydraulic Pumps & Punches

HP-700	10,000 psi Hydraulic Hand Pump	83
FP-700	10,000 psi Hydraulic Foot Pump	83
R-14EF	1/2 HP, 10,000 psi Hydraulic Pump	84
R-14EA	3/4 HP, 10,000 psi Single Acting Hydraulic Pump	84
R-14EAD	3/4 HP, 10,000 psi Double Acting Hydraulic Pump	85
HPG-4	4 HP, Gas Engine 10,000 psi Hydraulic Pump	85





# Table of Contents

REC-P1	10,000 psi Battery Powered 28.8 Volt Pump	86	25CAT	Optional Cutter Head Attachment for REC-558U	93
SH-70M	35 Ton Hydraulic Steel Punch	87	UDK-1 & PU-15	"U" Die Adapters	93
URH-14	Remote Control Handle	88	REC-P1CASE	Steel Carrying Case	94
FS-14	Foot Switch	88	Cutting Tool Selection Guide		95
NC-SERIES	10,000 psi High Pressure Hydraulic Hose	89	Compression Tool Selection Guide		95
SC-SERIES	10,000 psi High Pressure Flush Face Couplers	89	ACSR Cutting Guide		96
Hydraulic Oil		90	360° of Sales, Service and After Market Products		97-106
			Huskie Tools Representative Directory		107-109
			Authorized Service Centers		109
		92	Index		110-111
		92			

## Additional Tooling and Accessories

ECO-L90	LED Light	
EZ-HLSTR/SL-HLSTR		
	Huskie Tools Holster	92



Precision Hydraulic Compression  
and Cutting Tools



Huskie Tools  
Headquarters  
Glendale Heights, IL



# The Huskie Tools Quality Advantage



**Huskie Tools Ambassador**  
**Clyde Legg, General Foreman**  
Company: Davis H. Elliot  
Dayton, OH

*Clyde holds the REC-S540.*

**Tools that make  
your job easier,  
reduce the risk  
of injury, and  
minimize worker  
downtime.**

**"INSIST  
on the best"**



## VERSATILE

Small, portable Huskie Tools hydraulic cutters and compression tools eliminate the cost and labor time required for cartage and set up of cumbersome equipment. Huskie Tools products reduce labor costs because they work faster. You save money on maintenance because our tools last for years with minimal maintenance. You also save the purchase, replacement, and maintenance costs of all the tools just one Huskie Tools product replaces.

## CONVENIENT

Self-contained Huskie hydraulic tools are lightweight, portable, and user-friendly. No set up time is required. They cut with amazing speed and are ideal for close quarters, manholes, trenches, underwater, and in other environments where acetylene torches, electric cutters, and larger tools cannot be used. Their versatility makes them advantageous for a wide variety of applications.

## SAFE

Hydraulic tools eliminate many risks of injury that are associated with conventional tools. The hydraulic mechanism does the work so there is little risk of continual strain on one muscle or group of muscles that could lead to injuries, lost time from work, or costly medical treatment.

## QUALITY

Because of Huskie Tools' superior research and development programs, most of our tools have no competition. Each one is engineered for maximum user efficiency, convenience, and versatility. Our superior technology has led us to a whole new era of robotic cutting and compression tools such as the battery operated REC-3410 and REC-S520 which allow for one man operation. Huskie Tools products are engineered for rugged use and long life. That's why we back them 100% – Huskie's Quality Advantage. Huskie Tools hydraulic tools are manufactured under the strict standards of ISO9001.

## WARRANTY POLICY

Huskie Tools products carry a warranty that makes us a leader in the tool industry. No other manufacturer dares to back its tools as we do.

All Huskie Tools SL-SERIES and REC-SERIES battery operated products carry a 5 year warranty. The ECO-SERIES battery operated products carry a 3 year or a 1 year warranty. The BP-80 batteries carry a 5 year or 1,000 recharge cycles warranty from the date stamped on the battery. All other Huskie Tools products carry a 5 year warranty.

Huskie Tools reserves the right to determine all warranty claims. Huskie Tools will not warranty tools containing parts or batteries not originally supplied by Huskie Tools. Failure due to misuse, abuse or repairs attempted by anyone other than Huskie Tools, Inc., or an authorized service center render this warranty null and void.

All factory repaired or reconditioned hydraulic tools carry a one year warranty on parts and labor.

## REPAIR & WARRANTY CLAIMS

All claims must be sent to Huskie for inspection and authorization. Before shipping tools to Huskie, a Repair Goods Authorization is required. Secure the authorization online, by telephone or write to Huskie Tools's main office with details of claim. Non-warranty repairs are handled using the same procedure.

**Repairs exceeding 50% of the cost of a new tool will be advised before repairs are made.**

For Part Numbers, please visit [huskietools.com](http://huskietools.com) and click on Huskie Documentation.

## PAYMENT TERMS

Upon credit approval Huskie Tools standard payment terms are net-30 days.

## FREIGHT

All Huskie Tools products are FOB, Glendale Heights, Illinois. Goods will be shipped pre-paid and added, unless otherwise specified. Freight shipments over \$17,000 are prepaid.

## COMPLETE SUPPORT SERVICES

Our customers have direct access to us for training, service, and problem solving. As specialists in tools, we maintain a trained repair staff and a large stock of parts. This contrasts with many tool suppliers who carry tools as a sideline without offering support services.

- \* Quick delivery. We maintain inventory at our headquarters.
- \* Training and trouble-shooting services.
- \* Fast repair service.
- \* Design and engineering service for special tool needs.
- \* (800) 860-6170 Phone
- \* (800) 345-3767 FAX
- \* [info@huskietools.com](mailto:info@huskietools.com)
- \* Website: [www.huskietools.com](http://www.huskietools.com)



Phone: 800-860-6170  
Fax: 800-345-3767





**ROBO BATTERY OPERATED TOOLS**

# All For One,

## All for One, One for All

One Huskie Tools 14.4  
Volt Battery allows you to  
operate all of our ROBO  
Battery Powered Cutting  
and Crimping tools.



**REC-5NDSL**  
P. 22



**REC-5630**  
P. 24



**REC-5750**  
P. 25



**REC-5510K**  
P. 31



**REC-558U**  
P. 21



**REC-5430**  
P. 27



**REC-3510**  
P. 28



**REC-3610**  
P. 32



**REC-5510**  
P. 29



**REC-CN558**  
P. 23



**REC-3510K**  
P. 30



**SL-ND**  
P. 13

**SL-CB**  
P. 16



**SL-750**  
P. 15



**SL-630**  
P. 14



**REC-3410**  
P. 26

**ECO-EZ**  
P. 18



Phone: 800-860-6170  
Fax: 800-345-3767



# One For All.



**REC-530Y**  
P. 34



**REC-560YC**  
P. 36



**REC-S520**  
P. 42



**REC-534YC**  
P. 35



**REC-585YC**  
P. 37



**REC-S524H**  
P. 43



**REC-S524CC**  
P. 44



**REC-S540**  
P. 45



**REC-S3550**  
P. 46



**SL-S20**  
P. 17



**REC-54M**  
P. 40



**REC-50U**  
P. 38



**REC-54ACM**  
P. 39



**REC-Y33**  
P. 41



# Order Data

## Standard ROBO\*Kits

**NOTE:** Pricing will vary according to tool kit combination.

SL-ND ROBO*CRIMP™	6 Ton Streamline Crimping Tool with Changeable Head	13
SL-630 ROBO*CRIMP™	6.2 Ton Streamline Dieless Crimping Tool	14
SL-750 ROBO*CRIMP™	6.2 Ton Streamline Dieless Crimping Tool	15
SL-CB ROBO*BEND™	Streamline Cable Bending Tool	16
SL-S20 ROBO*CUT™	6 Ton Streamline Cutting Tool with .75" Jaw Opening	17
ECO-EZ ROBO*CRIMP™	6 Ton Compression Tool with Changeable Head	18
REC-558U ROBO*CRIMP™	6 Ton Compression Tool with 1.8" Jaw Opening	21
REC-5NDSL ROBO*CRIMP™	6 Ton Compression Tool with Changeable Head and 1-3/8" Jaw Opening	22
REC-CN558 ROBO*CRIMP™	6 Ton Compression Tool with .95" Jaw Opening	23
REC-5630 ROBO*CRIMP™	6.2 Ton Dieless Compression Tool with .90" Jaw Opening	24
REC-5750 ROBO*CRIMP™	6.2 Ton Flip-Top Dieless Compression Tool with 1.5" Opening	25
REC-3410 ROBO*CRIMP™	12 Ton Compression Tool with 1" Jaw Opening	26
REC-5430 ROBO*CRIMP™	12 Ton Compression Tool with 1-3/16" Jaw Opening	27
REC-3510 ROBO*CRIMP™	12 Ton Compression Tool with 1.65" Jaw Opening	28
REC-5510 ROBO*CRIMP™	12 Ton Compression Tool with 1.65" Jaw Opening	29
REC-3510K ROBO*CRIMP™	12 Ton Compression Tool with 1.5" Jaw Opening	30
REC-5510K ROBO*CRIMP™	12 Ton Compression Tool with 1.5" Jaw Opening	31
REC-3610 ROBO*CRIMP™	15 Ton Compression Tool with 2" Jaw Opening	32
REC-SB	Shear Bolt Wrench	33
REC-530Y ROBO*CUT™	6.6 Ton Cutting Tool with 1-3/16" Jaw Opening	34
REC-534YC ROBO*CUT™	6.6 Ton Cutting Tool with 1-3/8" Jaw Opening	35
REC-560YC ROBO*CUT™	6.6 Ton Scissor-Type Cutting Tool with 2.5" Jaw Opening	36
REC-585YC ROBO*CUT™	9 Ton Scissor-Type Cutting Tool with 3.3" Jaw Opening	37
REC-50U ROBO*SLICE™	Gear-Driven Cable Cutter with 2" Jaw Opening	38
REC-54ACM ROBO*SLICE™	Gear-Driven Cable Cutter with 2-1/8" Jaw Opening	39
REC-54M ROBO*SLICE™	Gear-Driven Cable Cutter with Notched Blade and 2-1/8" Jaw Opening	40
REC-Y33 ROBO*SLICE™	Gear-Driven Scissor Cutter with 1-1/4" Jaw Opening	41
REC-S520 ROBO*CUT™	6.6 Ton Battery Powered Cutter with .75" Jaw Opening	42
REC-S524H ROBO*CUT™	8 Ton Battery Powered Cutter with .95" Jaw Opening	43
REC-S524CC ROBO*CUT™	8 Ton Cutting Tool with .95" Jaw Opening	44
REC-S540 ROBO*CUT™	8 Ton Cutting Tool with .6" Jaw Opening	45
REC-S3550 ROBO*CUT™	13 Ton Cutting Tool with 2" Jaw Opening	46
REC-P1 ROBO*PUMP	10,000 psi Battery Powered 28.8 Volt Pump	47

### Standard ROBO\*Kits Include

- 1 Battery Powered Tool
- 1 Carrying Case
- 1 CH-90 Tri-Chemistry Charger
- 2 BP-80 Lithium Ion Batteries
- 1 Carrying Strap

### Battery and Charger:

**BP-80** Huskie Tools Lithium Ion Battery

**CH-90** Huskie Tools Tri-Chemistry Charger

*This charger can charge the BP-80 and ALL previous Huskie Tools batteries, including the BP-70, BP-70EI and the BP-70MH.*



Phone: 800-860-6170  
Fax: 800-345-3767





**SL-LINE**



# Battery Operated Tools



**Huskie Tools Booth**  
**ICUEE 2011**

**SL-ND**  
**Pg. 13**



**SL-CB**  
**Pg. 16**



**ECO-EZ**  
**Pg. 18**



**SL-S20**  
**Pg. 17**



**Compression Tools-REC Line**  
**Pgs. 21-33**



**Cutting Tools-REC Line**  
**Pgs. 34-46**



**Dieless SL Tools**  
**Pg. 14-15**





# SL-ND ROBO\*CRIMP™

## 6 Ton Streamline Crimping Tool with Changeable Head

Accepts "W", "O" and "X"  
Type Dies

• See Page 64



### Specifications

Output	6 Ton
Weight	8 lbs. with Battery
Length	22"

### Crimping Estimates

	BP-80
4/0-4/0 H-Tap	100

### Connector Range

Lugs and Splices	#8-500 MCM Cu #8-350 MCM Al
H-Taps	Up to 4/0-4/0

### Cutting Capacities with SLCUT-JAW

ACSR	Up to 4/0
Standard Guy Wire	3/8"
Soft Locks	3/8"
Soft Steel Bolts	3/8"

### Features

- Forged Jaws for Long Life
- Brush Protection Standard on All Jaws
- New Pull-Pin Design for Quick Jaw Change
- Bright White, LED Lights for Working in Low Light Conditions
- Three Compression Heads-ND, O, and BG
- One Hand Operation
- One Cutting Jaw For ACSR, Guy Wire & Bolts
- Rotational Head
- Audible Bypass when Predetermined Pressure is Achieved
- Tested Up To 75kV
- 5 Year Warranty on Tool, Battery & Charger

The **SL-ND** was developed after listening to feedback from our customers for a more robust, higher-quality, REC-style streamline tool. This new tool platform is the culmination of almost three years of research and development and will stand up to the most demanding tasks that linemen face every day.

The SL has a choice of five jaw types, including three compression heads, the SLND-JAW, SLO-JAW, or SLBG-JAW. The SLND-JAW head combines ND and K jaws. For cutting, switch to the SLCUT-JAW and for bending, use the SLCB-JAW. Quickly change between head types with the pull-pin design.

No need for another battery system, as this tool operates on the same 14.4 volt battery used in all of the Huskie Robo tools. The SL-ND Streamline tool not only carries a 5 year warranty on the tool but on the battery and charger as well.

For additional ordering information, please refer to page 10.



SLCB-JAW  
See Page 16 for SL-CB

### Optional Accessories

SL-HLSTR	Huskie Tools Holster
----------	----------------------



# SL-630 ROBO\*CRIMP™

6.2 Ton Streamline Dieless Crimping Tool with .9" Jaw Opening

## Specifications

Output	6.2 Tons
Weight	10.5 lbs. with Battery
Length	21.5"
Jaw Opening	.9"

## Crimping Estimates

	BP-80
1/0 Cu	90
500 MCM Cu	110

## \*Connector Range

Lugs and Splices	#6 AWG-500 MCM
------------------	----------------

## Features

- Tested Up to 75kV
- Rotational Head
- Weather Resistant Housing
- Bright White, LED Lights for Working in Low Light Conditions
- Audible Bypass when Predetermined Pressure is Achieved
- \*Designed to crimp Anderson connectors & other brand connectors manufactured to ANSI C119.4
- Eliminates the Need for Dies
- 5 Year Warranty on Tool, Battery & Charger



LED lights on both sides of tool



The **SL-630** is a battery operated, dieless compression tool used to compress Anderson style lugs. 6.2 tons of compression force is achieved when the tool advances and bypasses at the predetermined pressure. Advance and retract buttons on the tool handle allow for one hand operation, freeing the other hand to maneuver the cable.

**NOTE:** Both the SL-630 and SL-750 are designed to crimp Anderson Style connectors. Other brand connectors manufactured to ANSI specifications C119.4 can be used. For range-taking connectors, the cable must be maximum size specified for the connector. Consult your connector manufacturer for dieless applications.

For additional ordering information, please refer to page 10.



# SL-750 ROBO\*CRIMP™

6.2 Ton Streamline Dieless Crimping Tool with 1.5" Jaw Opening



## Specifications

Output	6.2 Tons
Weight	10.5 lbs. with Battery
Length	21.5"
Jaw Opening	1.5"

## Crimping Estimates

	BP-80
1/0 Cu	90
500 MCM Cu	110

## \*Connector Range for SL-750

Lugs and Splices	#6 AWG-750 MCM
------------------	----------------

## Features

- Tested Up to 75kV
- Rotational Head
- Weather Resistant Housing
- Bright White, LED Lights for Working in Low Light Conditions
- Audible Bypass when Predetermined Pressure is Achieved
- \*Designed to crimp Anderson connectors & other brand connectors manufactured to ANSI C119.4
- Flip-Top Head Design
- Eliminates the Need for Dies
- 5 Year Warranty on Tool, Battery & Charger

The **SL-750** is a flip-top, dieless tool used to crimp cables up to 750 MCM. The flip top latch opens to allow for easy cable positioning and removal. The dieless system is used for non-tension splices and terminations. There is one stationary and three movable indenting nibs which close at 90° angles to each other so that the connector is squeezed equally at four strategic points with 6 tons of force. The top can be unlatched to accommodate larger size lugs and cables up to 750 MCM. Typical applications include in-line splicing connectors and lug terminations.

**NOTE:** Both tools are designed to crimp Anderson Style connectors. Other brand connectors manufactured to ANSI specifications C119.4 can be used. For range-taking connectors, the cable must be maximum size specified for the connector. Consult your connector manufacturer for dieless applications.

For additional ordering information, please refer to page 10.





# SL-CB ROBO\*BEND™

## Streamline Cable Bending Tool

### Specifications

Weight	12 lbs. with Battery
Size	7" L X 14" W X 22" H

### Bending Estimates

Consult Factory

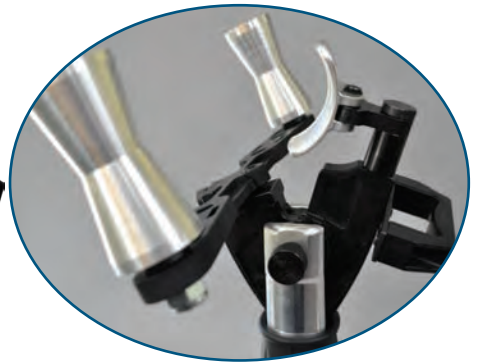
### Bending Capacity

Cable	1000 MCM Cu For Larger Cable, Consult Factory
-------	---

### Features

- New Pull-Pin Design for Quick Jaw Change
- Bright White, LED Lights for Working in Low Light Conditions
- Audible Bypass when Predetermined Pressure is Achieved
- Tested Up To 75kV
- 5 Year Warranty on Tool, Battery & Charger

SLCB-JAW  
See Page 13 for Jaw Only



LED lights on both sides of tool

Huskie Tools is pleased to introduce the **SL-CB**, the first of its kind in the electrical utility industry, is a battery powered cable bender. The SL-CB utilized the pull-pin design, allowing technicians to change jaws from compression, to cutting, to cable bending. The SL-CB is just one of the many ergonomic solutions, provided by Huskie Tools, to help reduce strains and sprains associated with the daily tasks of a powerline technician. The SL-CB has several different settings, so the tool can be used on either secondary or primary conductor in a variety of sizes. Featuring a low profile, the SL-CB can be used in a variety of close-quarter environments; such as underground vaults, meter bases and substation applications and wherever cable bending is required.

**NOTE:** Contact cable manufacturer for specified cable bending radii and cable bending requirements.

For additional ordering information, please refer to page 10.



# SL-S20 ROBO\*CUT™

6 Ton Streamline Cutting Tool with .75" Jaw Opening



LED lights on both  
sides of tool

The **SL-S20** was designed to cut the toughest steel used in construction today. It can replace an entire tool kit, including several sizes of conventional bolt cutters, hacksaws, acetylene torches and cable cutters.

With the pull of a trigger, you can cut ACSR cables up to 477, standard guy wires to 3/8", and ground rods to 1/2". The specially designed flip-top latch and rotating head provide exceptional ease of use and maneuverability in tight working quarters.

For additional ordering information, please refer to page 10.

## Specifications

Output	6 Ton
Weight	6 lbs. with Battery
Size	19"
Jaw Opening	.75"

## Cutting Estimates

	BP-80
336 ACSR	90
1/2" Wire Rope	90
1/2" Rebar	60
1/2" Ground Rod	60
3/8" Guy Wire	45

## Cutting Capacities

Wire Rope	5/8"
Rebar (Sc 40)	1/2"
Rebar (Sc 60)	3/8"
Ground Rod	1/2"
ACSR	477 MCM
Guy Wire	3/8"

## Features

- Flip-Top Latching Head
- Tested Up to 75kV
- One Hand Operation
- Rotational Head
- Rapid Advance
- 5 Year Warranty on Tool, Battery & Charger

## Optional Accessories

SL-HLSTR	Huskie Holster
----------	----------------



# ECO-EZ ROBO\*CRIMP™

6 Ton Compression Tool with Changeable Head

## Specifications

Output	6 Ton
Weight	6 lbs. with Battery
Length	20.5"

## Crimping Estimates

	BP-80
4/0-4/0 H-Tap	100

## Connector Range

Lugs and Splices	#8-500 MCM Cu #8-300 MCM Al
H-Taps	Up to 4/0-4/0

## Cutting Capacities with RBC-38

ACSR	Up to 4/0
Standard Guy Wire	3/8"
Soft Locks	3/8"
Soft Steel Bolts	3/8"

## Features

- 6 Heads to Choose From
- Accepts All "W" & "X" Type Dies
- One Hand Operation
- Rotational Head
- Audible Bypass when Predetermined Pressure is Achieved
- Tested Up To 75kV
- 6 Ton Output
- Compatible with All Huskie 14.4V Batteries
- Brush Protection Guards



## Optional Accessories

HT58CUT	Cutter Dies
EZJAW-COVER	Brush Protection Guards
EZ-HLSTR	Huskie Holster



Brush Protection Guards



Pull-Pin Design  
Optional-EZ-97



The **ECO-EZ** Streamline compression tool has a powerful 6 ton output. When ordering, choose from any of the six available heads that meet your needs and switch between multiple heads with the pull-pin design. The swivel head design allows the jaws to rotate mo 180° for operator convenience.

No need for another battery system. This tool operates on the same 14.4 volt battery used in all of the Huskie Robo tools. Just like the rest of our battery tools, energized lines will not effect the operation or performance of the tool.

For additional ordering information, please refer to page 10.

Only EZK jaws accept Kearney "O" type dies. All others accept "W" and "X".





It's time  
for



**Huskie**  
**TOOLS**





**REC-LINE**

# REC-558U ROBO\*CRIMP™

6 Ton Compression Tool with 1.8" Jaw Opening



The **REC-558U** was designed to squeeze commonly used service entrance connectors, including lugs, sleeves, H-Taps and C-Taps. The rapid advance feature allows the operator quicker compression cycles. In addition to the rapid advance feature, it also has incorporated an electronic counter that will allow a service technician to read the number of compression cycles the tool has made. Also, the new tool housing has been reinforced to improve durability during heavy field use.

A factory pre-set bypass cartridge assures a six ton compression every time. The REC-558U accepts either "W", "O" or "X" type dies. The D3 nest die comes standard with the tool. Always consult your connector manufacturer for proper die/connector combinations.

The REC-558U will accept the optional 25CAT cutter head attachment. Quick release pins allow the operator to change between compression and cutter head in one minute with no springs or pins to lose.

For additional ordering information, please refer to page 10.

Accepts "W", "O" and "X" Type Dies

- See Page 64 for Available Huskie Dies

## Specifications

Output	6 Ton
Weight	8 lbs. with Battery
Size	13"L x 12"H x 2.5"W
Jaw Opening	1.8"

## Crimping Estimates

	BP-80
#6 Cu/Al	250
1/0 Cu/Al	195
4/0 Cu/Al	150

## Connector Range

Lugs and Splices	#8-500 MCM Cu #8-300 MCM Al
H-Taps	Up to 4/0-4/0

## Optional Accessories

25CAT	Cutter Head, p. 93
HT58CUT	Cutter Die, p.64
ROB-358N	Insulated Jaw

## Features

- One Hand Operation
- Tested Up to 75kV
- Rotational Head
- Rapid Advance
- Ergonomically Balanced
- Ergonomic Pistol Grip Handle
- Weather Resistant Housing
- Audible Bypass when Predetermined Pressure is Achieved
- Interchangeable Cutter Head
- 5 Year Warranty on Tool, Battery & Charger



25CAT\*  
(optional)  
p. 93

\* Will not cut ALL 500 MCM copper cable-consult factory.





# REC-5NDSL ROBO\*CRIMP™

6 Ton Compression Tool with Changeable Head and 1-3/8" Jaw Opening

Accepts "W", "O" and "X"  
Type Dies

- See Page 64 for  
Available Huskie Dies  
Die compatibility varies by jaw.

## Specifications

Output	6 Ton
Weight	9 lbs. with Battery
Size	14"L x 12"H x 2.5"W
Jaw Opening	1-3/8"

## Crimping Estimates

	BP-80
#6 Cu/Al	250
1/0 Cu/Al	200
4/0 Cu/Al	150

## Connector Range

Lugs and Splices	#8-500 MCM Cu #8-300 MCM Al
H-Taps	Up to 4/0-4/0

## Cutting Capacities with SLCUT-JAW

ACSR	Up to 4/0
Standard Guy Wire	3/8"
Soft Locks	3/8"
Soft Steel Bolts	3/8"

## Features

- Forged Jaws for Long Life
- Brush Protection Standard on All Jaws
- New Pull-Pin Design for Quick Jaw Change
- One Hand Operation
- Tested Up to 75kV
- Rotational Head
- Rapid Advance
- Ergonomically Balanced
- Ergonomic Pistol Grip Handle
- Weather Resistant Housing
- Audible Bypass when Predetermined Pressure is Achieved
- 4 Heads to Choose From
- 5 Year Warranty on Tool, Battery & Charger



SLND-JAW



SLBG-JAW



SLO-JAW



SLCUT-JAW



The **REC-5NDSL** is the next generation of the REC-5ND tool. The REC-5NDSL has a choice of five jaw types, including three compression heads, the SLND-JAW, SLO-JAW, or SLBG-JAW. The SLND-JAW head combines ND and K jaws. Quickly change between head types with the pull-pin design. All jaw types are forged and come standard with brush protection. Users also have the option of switching to the SLCUT-JAW cutting head.

In addition to the rapid advance feature incorporated into the new REC-5NDSL, it also has an electronic counter that allows a service technician to read the number of compression cycles the tool has made. Also, the tool housing has been reinforced to improve durability during heavy field use.

For additional ordering information, please refer to page 10.



# REC-CN558 ROBO\*CRIMP™

6 Ton Compression Tool with .95" Jaw Opening

Accepts "W", "O" and "X"  
Type Dies

- See Page 64 for  
Available Huskie Dies



The **REC-CN558** is an open jaw version of the REC-558U latched type tool. The open jaw can easily fit into tight situations where the closing of a jaw latch would be a problem. The jaw is covered with a rubber boot designed to provide some insulated protection against "brush" contact with energized cables. The tool should not be used as an insulated tool since the dies and die holding pins are always exposed.

The head can be turned 180° and positioned to accommodate the operator's work methods. A complete cycled compression is accomplished by the simple squeeze of a trigger. A factory preset by-pass cartridge assures a complete compression every time. Its 6-ton output is equal to any comparable handheld, hydraulic compression tool and far exceeds any mechanical crimper. The REC-CN558 is supplied with D3 nest dies, which can be interchanged with Kearney, or T&B "O" type dies. If you wish to use the Huskie or another brand of "W" type dies, simply slide them over the D3 nest dies and snap in position. The output pressure, of the REC-CN558 can be checked with the PG-15 pressure gauge when necessary.

For additional ordering information, please refer to page 10.

## Specifications

Output	6 Ton
Weight	9 lbs. with Battery
Size	13"L x 12"H x 2.5"W
Jaw Opening	.95"

## Crimping Estimates

	BP-80
#6 Cu/Al	250
1/0 Cu/Al	190
4/0 Cu/Al	150

## Connector Range

Lugs and Splices	#8-500 MCM Cu #8-300 MCM Al
H-Taps	Up to 4/0-4/0

## Optional Accessory

HT58CUT	Cutter Die, p. 64
---------	-------------------

## Features

- One Hand Operation
- Tested Up to 75kV
- Rotational Head
- Rapid Advance
- Ergonomically Balanced
- Ergonomic Pistol Grip Handle
- Weather Resistant Housing
- Audible Bypass when Predetermined Pressure is Achieved
- Open C-Head Design
- 5 Year Warranty on Tool, Battery & Charger





# REC-5630 ROBO\*CRIMP™

6.2 Ton Dieless Compression Tool with .90" Jaw Opening

## Specifications

Output	6.2 Ton
Weight	11.5 lbs. with Battery
Size	14"L x 13"H x 2.5"W
Jaw Opening	.90"
Center Opening	1.25"

## Crimping Estimates

	BP-80
500 MCM Cu	110

## \*Connector Range

Lugs and Splices	10 AWG-500 MCM
------------------	----------------

## Features

- One Hand Operation
- Tested Up to 75kV
- Rotational Head
- Rapid Advance
- Ergonomically Balanced
- Ergonomic Pistol Grip Handle
- Weather Resistant Housing
- Audible Bypass when Predetermined Pressure is Achieved
- \*Designed to crimp Anderson connectors & other brand connectors manufactured to ANSI C119.4
- Eliminates the Need for Dies
- 5 Year Warranty on Tool, Battery & Charger



The **REC-5630** is a battery operated, dieless compression tool used to compress Anderson style lugs. Six tons of compression force are achieved when the tool advances and bypasses at the predetermined pressure. Advance and retract buttons on the tool handle allow for one hand operation, freeing the other hand to maneuver the cable. The REC-5630 is designed to crimp Anderson Style connectors. Other brand connectors manufactured to ANSI specifications C119.4 can be used. For range-taking connectors, the cable must be maximum size specified for the connector. Consult your connector manufacturer for dieless applications.

**NOTE:** For range taking connectors, the cable must be the maximum size specified for the connector. Consult your connector manufacturer for dieless applications.

For additional ordering information, please refer to page 10.



# REC-5750 ROBO\*CRIMP™

## 6.2 Ton Flip-Top Dieless Compression Tool with 1.5" Jaw Opening



The **REC-5750** is a flip-top, dieless tool used to crimp cables up to 750 MCM. The flip-top latch opens to allow for easy cable positioning and removal. The dieless system is used for non-tension splices and terminations. There is one stationary and three movable indenting nibs which close at 90° angles to each other so that the connector is squeezed equally at four strategic points with 6 tons of force. The top can be unlatched to accommodate larger size lugs and cables up to 750 MCM. Typical applications include in-line splicing connectors and lug terminations. The REC-5750 is designed to crimp Anderson Style connectors. Other brand connectors manufactured to ANSI specifications C119.4 can be used. For range-taking connectors, the cable must be maximum size specified for the connector. Consult your connector manufacturer for dieless applications.

It also has an external bypass cartridge for faster pressure adjustment & repair times.

**NOTE:** For range taking connectors, the cable must be the maximum size specified for the connector. Consult you connector manufacturer for dieless applications.

For additional ordering information, please refer to page 10.

### Specifications

Output	6.2 Ton
Weight	12 lbs. with Battery
Size	15.5"L x 13"H x 2.5"W
Jaw Opening	1.5"

### Crimping Estimates

	BP-80
1/0 Cu/Al	90
500 MCM Cu	110

### \*Connector Range

Lugs and Splices	#6 AWG-750 MCM
------------------	----------------

### Features

- One Hand Operation
- Tested Up to 75kV
- Rotational Head
- Rapid Advance
- Ergonomically Balanced
- Ergonomic Pistol Grip Handle
- Weather Resistant Housing
- Audible Bypass when Predetermined Pressure is Achieved
- \*Designed to crimp Anderson connectors & other brand connectors manufactured to ANSI C119.4
- Flip-Top Head Design
- Eliminates the Need for Dies
- 5 Year Warranty on Tool, Battery & Charger





# REC-3410 ROBO\*CRIMP™

12 Ton Compression Tool with 1" Jaw Opening

Accepts "U" Type Dies

- See Page 65 for Available Huskie Dies

## Specifications

Output	12 Ton
Weight	19 lbs. with Battery
Size	18"L x 10.5"H x 3.5"W
Jaw Opening	1"

## Crimping Estimates

	BP-80
4/0 Cu	90
500 MCM Cu	60

## Connector Range

Lugs	#8 AWG - 750 MCM Cu #10 AWG - 750 MCM Al
Splices	#8 AWG - 400 MCM Cu #10 AWG - 400 MCM Al

## Features

- Tested Up to 75kV
- Rotational Head
- Rapid Advance
- Ergonomically Balanced
- Weather Resistant Housing
- Audible Bypass when Predetermined Pressure is Achieved
- Includes DIE-CASE
- Protective Rubber Boot on "C" Head For Brush Contact
- 5 Year Warranty on Tool, Battery & Charger



Huskie Tools is giving you more tool speed and easier handling with our **REC-3410** battery powered compression tool. It features a rubber boot and it is designed to accommodate all 12 ton "U" type dies widely used throughout the electrical industry.

The REC-3410 is faster and more compact than our previous model. It offers a wider handle opening with finger grooves, allowing easier access for gloved work. The base of the tool is contoured for stability and incorporates finger grooves for a better grip.

For additional ordering information, please refer to page 10.



# REC-5430 ROBO\*CRIMP™

12 Ton Compression Tool with 1-3/16" Jaw Opening



The **REC-5430** weighing just 14.75 pounds was specifically designed for use in single-handed operation in overhead applications such as cable trays. This allows one hand to control the work while the other hand is free to operate the tool. It also eliminates the cumbersome hoses and larger, heavier tools traditionally used in overhead work.

The REC-5430 was designed from the same hydraulic system as our REC-558U featuring a rapid advance ram to reduce cycle time. It accepts all 12 ton "U" type dies and is capable of 750 MCM copper lugs and 600 MCM copper splices.

For additional ordering information, please refer to page 10.

Accepts "U" Type Dies

- See Page 65 for Available Huskie Dies

## Specifications

Output	12 Ton
Weight	14.75 lbs. with Battery
Size	15.5"L x 12"H x 3"W
Jaw Opening	1-3/16"

## Crimping Estimates

BP-80

500 MCM Cu 60

750 MCM Cu 45

## Connector Range

Lugs 750 MCM Cu/Al

Splices 600 MCM Cu/Al

## Optional Accessory

DIE-CASE Die Case, p. 69

## Features

- One Hand Operation
- Tested Up to 75kV
- Rotational Head
- Rapid Advance
- Ergonomically Balanced
- Ergonomic Pistol Grip Handle
- Weather Resistant Housing
- Audible Bypass when Predetermined Pressure is Achieved
- Protective Rubber Boot on "C" Head For Brush Contact
- 5 Year Warranty on Tool, Battery & Charger



# REC-3510 ROBO\*CRIMP™

12 Ton Compression Tool with 1.65" Jaw Opening

Accepts "U" Type Dies

- See Page 65 for Available Huskie Dies

## Specifications

Output	12 Ton
Weight	20 lbs. with Battery
Size	19"L x 10.5"H x 3.5"W
Jaw Opening	1.65"

## Crimping Estimates

	BP-80
500 MCM Cu	60
750 MCM Cu	45

## Connector Range

Lugs and Splices	750 MCM Cu/Al
------------------	---------------

## Features

- Tested Up to 75kV
- Rotational Head
- Rapid Advance
- Ergonomically Balanced
- Weather Resistant Housing
- Audible Bypass when Predetermined Pressure is Achieved
- Includes DIE-CASE
- Protective Rubber Boot on "C" Head For Brush Contact
- UL Classified
- 5 Year Warranty on Tool, Battery & Charger



The **REC-3510** is the largest in our line of battery operated 12 ton compression tools. The jaw opening is 1.65" and will accept mid-span copper and aluminum splices and lugs up to 750 MCM Cu/Al. When the sleeves are compressed they can be removed through the large jaw. This tool accepts all "U" type dies available on the market.

A built-in, preset 10,000 psi bypass cartridge will audibly bypass when optimal pressure is achieved. Test dies accompanied with our PG-4 can confirm the output pressure when needed. The output pressure can be adjusted via a bypass port located at the top of the tool. This tool has the most universal range of all our self-contained ROBO\* tools.

For additional ordering information, please refer to page 10.





# REC-5510 ROBO\*CRIMP™

12 Ton Compression Tool with 1.65" Jaw Opening



Accepts "U" Type Dies

- See Page 65 for Available Huskie Dies

## Specifications

Output	12 Ton
Weight	15 lbs. with Battery
Size	16"L x 12"H x 3"W
Jaw Opening	1.65"

## Crimping Estimates

	BP-80
4/0 Cu	90
500 MCM Cu	60

## Connector Range

Lugs and Splices	Up to 750 MCM Cu/Al
------------------	---------------------

## Optional Accessory

DIE-CASE	Die Case, p. 69
----------	-----------------

## Features

- One Hand Operation
- Tested Up to 75kV
- Rotational Head
- Rapid Advance
- Ergonomically Balanced
- Ergonomic Pistol Grip Handle
- Weather Resistant Housing
- Audible Bypass when Predetermined Pressure is Achieved
- Protective Rubber Boot on "C" Head For Brush Contact
- 5 Year Warranty on Tool, Battery & Charger

The **REC-5510** was specifically designed for use in single-handed operation in overhead applications such as cable trays. This allows one hand to control the work while the other hand is free to operate the tool. It also eliminates the cumbersome hoses and larger, heavier tools traditionally used in overhead work.

The REC-5510 has the same jaw opening as our REC-3510 battery operated 12-ton compression tool. The opening is 1.65" which will accept mid-span copper and aluminum splices and lugs up to 750 MCM Cu/Al. This tool accepts all "U" type dies available on the market.

Portability and handling are made easier because the REC-5510 system is self-contained and compact. The new rapid advance system reduces tool run time, giving you more crimp cycles per battery charge. A built-in, pre-set 10,000 psi bypass cartridge will audibly "bypass" when the optimal pressure is achieved.

For additional ordering information, please refer to page 10.



# REC-3510K ROBO\*CRIMP™

12 Ton Compression Tool with 1.5" Jaw Opening

Accepts "WH-2", PH-2" and  
"WH-3" Type Dies

- See Page 66 for  
Available Huskie Dies

## Specifications

Output	12 Ton
Weight	20 lbs. with Battery
Size	19"L x 10.5"H x 3.5"W
Jaw Opening	1.5"

## Crimping Estimates

	BP-80
500 MCM Cu	70
750 MCM Cu	55

## Connector Range

Lugs	1033 ACSR
Splices	477 ACSR

## Features

- Tested Up to 75kV
- Rotational Head
- Rapid Advance
- Ergonomically Balanced
- Weather Resistant Housing
- Audible Bypass when Predetermined Pressure is Achieved
- Includes DIE-CASE
- Protective Rubber Boot on "C" Head For Brush Contact
- 5 Year Warranty on Tool, Battery & Charger

## Optional Accessories

UDK-1	"U" Die Adapter, p. 93
HTK-CASE	WH-2, PH-2, WH-3 Die Specific Case, p. 69



UDK-1  
"U" Die  
Adapter



The **REC-3510K** battery powered compression tool is designed to accept Kearney WH-2, PH-2, and WH-3 style dies. It has a full 12 ton capacity and its 1.5" jaw opening accepts lugs up to 1033 MCM.

The upgraded REC-3510K is faster and more compact than our previous model. It offers a wider handle opening with finger grooves, allowing easy access for gloved work. The base of the tool is contoured for stability and incorporates finger grooves for a better grip.

For additional ordering information, please refer to page 10.



# REC-5510K ROBO\*CRIMP™

12 Ton Compression Tool with 1.5" Jaw Opening

Accepts "WH-2", PH-2" and  
"WH-3" Type Dies

• See Page 66 for  
Available Huskie Dies



The **REC-5510K** battery powered compression tool is designed to accept Kearney WH-2, PH-2 and WH-3 style dies. Weighing just 16.5 pounds it was specifically designed for use in single-handed operation in overhead applications such as cable tray. It also eliminates the cumbersome hoses and larger, heavier tools traditionally used in overhead work.

The REC-5510K was designed from the same hydraulic system as our REC-558U featuring a rapid advance ram to reduce cycle time. It has a full 12-ton capacity and its 1.5 inch jaw opening accepts lugs up to 1033 MCM. Compression head rotates 360° for use in any position.

For additional ordering information, please refer to page 10.

## Specifications

Output	12 Ton
Weight	16.5 lbs. with Battery
Size	16"L x 12"H x 3"W
Jaw Opening	1.5"

## Crimping Estimates

	BP-80
500 MCM Cu	60
750 MCM Cu	45

## Connector Range

Lugs	1033 ACSR
Splices	477 ACSR

## Features

- One Hand Operation
- Tested Up to 75kV
- Rotational Head
- Rapid Advance
- Ergonomically Balanced
- Ergonomic Pistol Grip Handle
- Weather Resistant Housing
- Audible Bypass when Predetermined Pressure is Achieved
- Protective Rubber Boot on "C" Head For Brush Contact
- 5 Year Warranty on Tool, Battery & Charger

## Optional Accessories

UDK-1	"U" Die Adapter, p. 93
HTK-CASE	WH-2, PH-2, WH-3 Die Specific Case, p. 69



UDK-1  
"U" Die  
Adapter





# REC-3610 ROBO\*CRIMP™

15 Ton Compression Tool with 2" Jaw Opening

Accepts "P" Type Dies

- See Page 66 for Available Huskie Dies

## Specifications

Output	15 Ton
Weight	24 lbs. with Battery
Size	21.5" L x 10.5" H x 3.5" W
Jaw Opening	2"

## Crimping Estimates

	BP-80
1000 MCM Cu	40

## Connector Range

Aluminum	#8 AWG-1250 MCM
Copper	#8 AWG-1500 MCM
H-Tap	Up to 750/750



## Features

- Tested Up to 75kV
- Rotational Head
- Rapid Advance
- Ergonomically Balanced
- Weather Resistant Housing
- Audible Bypass when Predetermined Pressure is Achieved
- Includes DIE-CASE
- Protective Rubber Boot on Head
- Flip-Top Rotating Head
- External Pressure Adjustment
- 5 Year Warranty on Tool, Battery & Charger

## Optional Accessory

PU-15	"U" Die Adapter, p. 93
-------	------------------------



PU-15  
"U" Die  
Adapter

The **REC-3610** is our 15 ton compression tool that is able to crimp splices and lugs up to 1250 MCM aluminum and 1500 MCM copper. The REC-3610 offers a wide handle opening with finger grooves, allowing easy access for gloved work.

The base of the tool is contoured for stability and incorporates finger grooves for a better grip. The tool has a latched head and its pull-out release pin cannot be entirely removed from the jaw. The jaw opens wide to accept all "P" type dies used in the industry today. The PU-15 die adapter is available for use with all 12 ton "U" type dies.

For additional ordering information, please refer to page 10.



# REC-SB

## Shear Bolt Wrench



### Specifications

Weight	5 lbs. with Battery
Size	13.75"L x 7"H x 3"W

### Features

- Battery Operated Shear Bolt Wrench for Shear Bolt Connectors
- For Shear Bolt Underground Connectors
- For Connection 2-8 Services in Hand Holes
- Variable Speed to 2,200 rpm, 1/2" Square Drive
- Short Body Length for Tight Space Application
- Well-Balanced and Lightweight
- 48/ft. Pounds of Torque
- Forward and Reverse
- 5 Year Warranty on Tool, Battery & Charger

The **REC-SB** is a battery operated shear bolt wrench especially designed to torque down and shear the bolts for electrical connection use. The tool features a unique shape to reduce its length for easy access to tight spaces. It has 48 ft./lbs. of torque and features variable speeds up to 2,200 rpm.

For additional ordering information, please refer to page 10.



# REC-530Y ROBO\***CUT**™

6.6 Ton Cutting Tool with 1-3/16" Jaw Opening

## Specifications

Output	6.6 Ton
Weight	11.4 lbs. with Battery
Size	15" L x 12" H x 2.5" W
Jaw Opening	1-3/16"

## Cutting Estimates

	BP-80
500 MCM Cu	110

## Cutting Capacities

Bar	DO NOT CUT
ACSR	336 MCM
Copper	500 MCM*
Aluminum	1.18" O.D.
Standard Guy Wire	3/8" Max.

## Features

- Open Scissor Jaw for Easy Cable Insertion
- Tested Up to 75kV
- One Hand Operation
- Rotational Head
- Rapid Advance
- Ergonomically Balanced
- Ergonomic Pistol Grip Handle
- Weather Resistant Housing
- Overload Bypass Protection
- 5 Year Warranty on Tool, Battery & Charger

\*Will not cut ALL 500 MCM copper cable-consult factory.

Due to material composition, the ratings are to be used as a guide. Actual capacity may vary due to "bypass" feature.



The **REC-530Y** was designed to cut ACSR cables up to 336 MCM, as well as copper cables up to 500 MCM and aluminum cables up to 1.18" outside diameter.

The hydraulic system features a rapid advance for reduced cycle times. All cuts are clean with a minimal amount of cable distortion, which allows for easy connector installation on cables. The open "C" type jaw is very convenient for the operator when reaching out to cut cable opposed to latching the cutter jaw around the cable. The head can be rotated 180° for greater maneuverability in tight working quarters. The keeper plate on the REC-530Y prevents jaws from spreading apart when cutting ACSR.

**NOTE:** This tool is not recommended for cutting 4/0 Penguin or 3/0 Pigeon ACSR Cables, see cutting guide on page 98.

For additional ordering information, please refer to page 10.





# REC-534YC ROBO\* CUT™

6.6 Ton Cutting Tool with 1-3/8" Jaw Opening



Large copper cable cutting is finally made easy with the **REC-534YC** – just pull the trigger and 6.6 tons immediately goes to work for you. The hydraulic system now features a rapid advance for reduced cycle times. This tool is similar to the REC-530Y, but has a slightly larger jaw opening without a “keeper” guard. Its sharp blades are rated for copper and aluminum cables only, up to 800 MCM or 1.4” Al outside diameter.

The open “C” type jaw is very convenient for the operator when reaching out to cut cable, as opposed to latching a cutting jaw around the cable. The jaws will accept a maximum of 800 MCM copper or aluminum cables up to 1.4.” Distortion of the cable is minimal and cables can still be sleeved easily. Once the cable is severed, the cutter blades can be opened by the push of the release trigger located below the activation trigger – one finger is all that is needed to cut and release the tool.

**NOTE:** DO NOT CUT STEEL.

For additional ordering information, please refer to page 10.

## Specifications

Output	6.6 Ton
Weight	11 lbs. with Battery
Size	15”L x 12”H x 2.5”W
Jaw Opening	1-3/8”

## Cutting Estimates

	BP-80
500 MCM Cu	130
750 MCM Cu	90

## Cutting Capacities

ACSR	DO NOT CUT
Copper	800 MCM
Aluminum	1.4” O.D.

## Features

- Open Scissor Jaw for Easy Cable Insertion
- Tested Up to 75kV
- One Hand Operation
- Rotational Head
- Rapid Advance
- Ergonomically Balanced
- Ergonomic Pistol Grip Handle
- Weather Resistant Housing
- Overload Bypass Protection
- For Copper and Aluminum Only
- 5 Year Warranty on Tool, Battery & Charger

Due to material composition, the ratings are to be used as a guide. Actual capacity may vary due to “bypass” feature.



# REC-560YC ROBO\*CUT™

6.6 Ton Scissor-Type Cutting Tool with 2.5" Jaw Opening

## Specifications

Output	6.6 Ton
Weight	11.2 lbs. with Battery
Size	16" L x 12" H x 2.5" W
Jaw Opening	2.5"

## Cutting Estimates

	BP-80
500 MCM Al	130
500 MCM Cu	110

## Cutting Capacities

ACSR	DO NOT CUT
Copper	500 MCM*
Aluminum	2" O.D.

## Features

- Open Scissor Jaw for Easy Cable Insertion
- Tested Up to 75kV
- One Hand Operation
- Rotational Head
- Rapid Advance
- Ergonomically Balanced
- Ergonomic Pistol Grip Handle
- Weather Resistant Housing
- Overload Bypass Protection
- Specifically Designed to Cut Large Jacketed Underground Cable
- For Copper and Aluminum Only
- 5 Year Warranty on Tool, Battery & Charger

\*Will not cut ALL 500 MCM copper cable-consult factory.

Due to material composition, the ratings are to be used as a guide. Actual capacity may vary due to "bypass" feature.



The **REC-560YC** works well for most underground aluminum cable cutting applications. It was designed to cut copper cables up to 500 MCM and aluminum up to 2" maximum outside diameter. The extra wide jaws make cutting the larger diameter underground cables easier. The hydraulic system is designed the same as the REC-558U featuring a rapid advance ram to reduce cycle time.

Because of the larger cutting surface of the blades, the maximum size copper cable that can be cut is 500 MCM. Larger cables will simply cause the cutter to bypass, which is a built-in overload safety device to prevent damage to the tool.

The large jaws can be placed over cables that lie flat on the ground and the cables will be scooped up as the cutting jaws are closed. All cuts are clean so that there is minimal cable distortion for cable sleeving purposes.

**NOTE:** DO NOT CUT STEEL.

For additional ordering information, please refer to page 10.



# REC-585YC ROBO\*<sup>®</sup>CUT™

9 Ton Scissor-Type Cutting Tool with 3.3" Jaw Opening



The **REC-585YC** is designed to cut copper and aluminum cables as well as lead-sheathed telecommunication cables. The extremely large jaws and scissor-type blades allow for easy cutting of large underground cables. The sidebar handle allows the user to stabilize and balance the tool.

This tool also has a built-in bypass cartridge to avoid cutter damage for those cables that are beyond the cutter's capacity. The open jaw design allows the user to scoop up cables that are against a wall, in hard to reach areas and on the ground.

**NOTE:** DO NOT CUT STEEL.

For additional ordering information, please refer to page 10.

## Specifications

Output	9 Ton
Weight	15.5 lbs. with Battery
Size	20"L x 12"H x 8"W
Jaw Opening	3.3"

## Cutting Estimates

	BP-80
1000 MCM Al	60
1000 MCM Cu	90

## Cutting Capacities

ACSR	DO NOT CUT
Aluminum	3"
Telecommunication	3"
Lead Sheath	2.5"

## Features

- Open Scissor Jaw for Easy Cable Insertion
- Tested Up to 75kV
- One Hand Operation
- Rotational Head
- Rapid Advance
- Ergonomically Balanced
- Ergonomic Pistol Grip Handle
- Weather Resistant Housing
- Overload Bypass Protection
- Sidebar Handle for Stability and Balance
- For Copper and Aluminum Only
- 5 Year Warranty on Tool, Battery & Charger

Due to material composition, the ratings are to be used as a guide. Actual capacity may vary due to "bypass" feature.





# REC-50U ROBO\*SLICE™

Gear-Driven Cable Cutter with 2" Jaw Opening

## Specifications

Weight	6 lbs. with Battery
Size	14.5"L x 4"H x 4.5"W
Jaw Opening	2"

## Cutting Estimates

	BP-80
1000 MCM Cu	40
1500 MCM Al	50

## Cutting Capacities

Aluminum	1500 MCM
Copper	1000 MCM*

## Features

- Tested Up to 75kV
- One Hand Operation
- Ergonomically Balanced
- Weather Resistant Housing
- Overload Circuit Breaker Protection
- For Copper and Aluminum Only
- 5 Year Warranty on Tool, Battery & Charger

\*Due to material composition, the ratings are to be used as a guide. Actual capacity may vary due to overload circuit breaker protection feature.

DO NOT CUT STEEL OR ACSR. Consult factory for more information on cutting copper cable.



The **REC-50U** battery operated slicing tool cuts 2" cable with the touch of a finger.

It features a powerful gear reduction motor that pulls a moveable blade through the toughest copper and aluminum cables.

The ROBO\*SLICE comfortably fits into the lineman's gloved hand, and repetitive ratcheting movement is entirely eliminated. Just a squeeze of the rocker arm trigger is all it takes to make a cut and almost no muscle power is needed. As a result, the risk of sprains, strains, and lost time due to muscle related injuries can be significantly reduced.

The moveable blade has wide gear teeth for extra power and full cutting traction. Gear guides are attached on both ends of the movable blade to align the gear teeth with the internal pinion gear.

For additional ordering information, please refer to page 10.



# REC-54ACM ROBO\*SLICE™

Gear-Driven Cable Cutter with 2-1/8" Jaw Opening



The **REC-54ACM** was designed to cut stranded copper cables and aluminum. The jaws will accept a maximum of 1500 MCM aluminum. The operation of this tool is the same as the REC-54M, but it has sharper blades for cutting only non-ferrous materials. Do not cut steel with this model, or blade damage will occur.

The REC-54ACM comfortably fits into the lineman's gloved hand, and repetitive ratcheting movement is entirely eliminated. We have rotated the handle 90° to the blade to achieve a more ergonomic and comfortable cutting position. Just a squeeze of the trigger is all it takes to make a cut and almost no muscle power is needed. As a result, the risk of sprains, strains, and lost time due to muscle related injuries can be significantly reduced.

The moveable blade has wide gear teeth for extra power and full cutting traction. Gear guides are attached on both ends of the movable blade to align the gear teeth with the internal pinion gear.

For additional ordering information, please refer to page 10.

## Specifications

Weight	7.2 lbs. with Battery
Size	16"L x 4"H x 4.5"W
Jaw Opening	2-1/8"

## Cutting Estimates

	BP-80
1000 MCM Cu	25
1500 MCM Al	30

## Cutting Capacities

Aluminum	1500 MCM
Copper	1000 MCM*

## Features

- Improved Ergonomic Handle
- 2-1/8" Jaw Opening
- Cuts up to 1500 MCM Al
- One Hand Operation
- Safety Lockout Switch
- Upgraded Motor and Gear System
- 5 Year Warranty on Tool, Battery & Charger

\*Due to material composition, the ratings are to be used as a guide. Actual capacity may vary due to overload circuit breaker protection feature.

DO NOT CUT STEEL OR ACSR. Consult factory for more information on cutting copper cable.



# REC-54M ROBO\*SLICE™

Gear-Driven Cable Cutter with Notched Blade and 2-1/8" Jaw Opening

## Specifications

Weight	8 lbs. with battery
Size	15.5"L x 4.5"H x 5"W
Jaw Opening	2-1/8"

## Cutting Estimates

	BP-80
1590 MCM ACSR	35+

## Cutting Capacities

Copper	750 MCM
Aluminum	1500 MCM
ACSR	1590 MCM*

## Features

- Improved Ergonomic Handle
- 2-1/8" Jaw Opening
- Cuts up to 1500 MCM Al
- One Hand Operation
- Safety Lockout Switch
- Upgraded Motor and Gear System
- 5 Year Warranty on Tool, Battery & Charger

\* NOT INTENDED FOR USE ON 795 DRAKE.

Due to material composition, the ratings are to be used as a guide. Actual capacity may vary due to overload circuit breaker protection feature.



The **REC-54M** is a heavy duty cable cutter primarily used to cut ACSR. It will cut up to 1590 MCM ACSR\* and copper cables up to 750 MCM. The large jaw opening will also accommodate aluminum cables up to 1500 MCM. Huskie Tools has notched both cutting blades to avoid the denting of the cutting surfaces when steel strand is encountered. We have rotated the handle 90° to the blade to achieve a more ergonomic and comfortable cutting position.

FOR CLEAN CUTS ON COPPER & ALL ALUMINUM CABLE PLEASE REFER THE REC-50U, REC-54AC & THE REC-54ACM.

This tool also incorporates a blade retainer, which keeps the blades from spreading apart while cutting steel cables. The REC-54M was designed for single and multi-stranded steel cores and aluminum cables. The powerful motor & gear drive allow the operator to cut through the toughest cables with just the pull of the trigger.

**NOTE:** The REC-54M is not intended to cut guy wires, ground rod or bolts.

For additional ordering information, please refer to page 10.





# REC-Y33 ROBO\*SLICE™

Gear-Driven Scissor Cutter with 1.25" Jaw Opening



The **REC-Y33** cable cutter is used to cut up to 636 ACSR and up to 500 MCM\* copper cables. The open jaw makes it easy to insert cables for one handed operation. The jaw, which incorporates a blade retainer, keeps the blade from spreading apart when cutting cable with a steel core.

It features a lock-out switch for reversing the blade direction all-with one handed operation. The powerful gear drive allows the operator to quickly cut some of the toughest cables with ease.

**NOTE:** The REC-Y33 will not cut guy wire, ground rod anchor rod or bolts.

For additional ordering information, please refer to page 10.

## Specifications

Weight	7.2 lbs. with Battery
Size	16"H x 4"L x 4.5"W
Jaw Opening	1.25"

## Cutting Estimates

	BP-80
636 ACSR	60

## Cutting Capacities

Copper	500 MCM*
Aluminum	Up to 1-1/4" O.D.
ACSR	636 MCM

## Features

- Tested Up to 75kV
- One Hand Operation
- Ergonomically Balanced
- Weather Resistant Housing
- Overload Circuit Breaker Protection
- 5 Year Warranty on Tool, Battery & Charger

\* Consult factory for more information on cutting 500 MCM copper cable.

Due to material composition, the ratings are to be used as a guide. Actual capacity may vary due to overload circuit breaker protection feature.



# REC-S520 ROBO\*<sup>TM</sup>CUT

6.6 Ton Battery Powered Cutter with .75" Jaw Opening

## Specifications

Output	6.6 Ton
Weight	9.5 lbs. with Battery
Size	12" L x 12" H x 2.5" W
Jaw Opening	.75"

## Cutting Estimates

	BP-80
336 ACSR	90
1/2" Wire Rope	90
1/2" Rebar	60
1/2" Ground Rod	60
3/8" Guy Wire	40

## Cutting Capacities

Wire Rope	5/8"
Rebar (Sc 40)	1/2"
Rebar (Sc 60)	3/8"
Ground Rod	1/2"
ACSR	477 MCM
Guy Wire	3/8"

## Features

- Flip-Top Latching Head
- Tested Up to 75kV
- One Hand Operation
- Rotational Head
- Rapid Advance
- Ergonomically Balanced
- Ergonomic Pistol Grip Handle
- Weather Resistant Housing
- Overload Bypass Protection
- 5 Year Warranty on Tool, Battery & Charger

Due to material composition, the ratings are to be used as a guide. Actual capacity may vary due to "bypass" feature.



20-07  
REC-S520 Replacement Blade



The **REC-S520** was designed to cut the toughest steel used in construction today. It can replace an entire tool kit, including several sizes of conventional bolt cutters, hacksaws, acetylene torches and cable cutters. The REC-S520 was designed from the same hydraulic system as the REC-558U featuring a rapid advance ram for reduced cycle times.

With the pull of a trigger, you can cut ACSR cables up to 477, standard guy wires to 3/8", and ground rods to 1/2". The specially designed flip-top latch and rotating head provide exceptional ease of use and maneuverability in tight working quarters. The REC-S520 has an overload bypass that will "kick out" when the tool reaches 6.6 tons or is attempting to cut cables beyond its capacities.

**NOTE:** DO NOT CUT EHS GUY WIRE OR CASE HARDENED STEEL RODS. SEE REC-S524CC, S-24CC, SP-24CC, S-32CC OR SP-32CC1.

For additional ordering information, please refer to page 10.



# REC-S524H ROBO\* CUT™

8 Ton Battery Powered Cutter with .95" Jaw Opening



The **REC-S524H** was designed to cut the toughest steel used in construction today. It can replace an entire tool kit, including several sizes of conventional bolt cutters, hacksaws, acetylene torches and cable cutters. The REC-S524H was designed from the same hydraulic system as the REC-558U featuring a rapid advance ram for reduced cycle times.

With the pull of the trigger, you can cut ACSR cables up to 477, standard guy wires to 5/8", and ground rods to 5/8". The specially designed flip-top latch and rotating head provide exceptional ease of use and maneuverability in tight working quarters. The REC-S524H has an overload bypass, which will "kick out" when tool reaches 8 tons or is attempting to cut materials beyond its capacities.

**NOTE:** DO NOT CUT CASE HARDENED STEEL RODS. SEE REC-S524CC, S-24CC, SP-24CC, S-32CC OR SP-32CC1.

For additional ordering information, please refer to page 10.

## Specifications

Output	8 Ton
Weight	10 lbs. with Battery
Size	12.5" L x 12" H x 2.5" W
Jaw Opening	.95"

## Cutting Estimates

	BP-80
336 ACSR	90
1/2" Wire Rope	90
1/2" Rebar	60
1/2" Ground Rod	60
Guy Wire	40

## Cutting Capacities

Wire Rope	7/8"
Rebar (Sc 40)	5/8"
Rebar (Sc 60)	1/2"
Ground Rod	5/8"
ACSR	477 MCM
Guy Wire	5/8"
Guy Wire (EHS)	7/16"

## Features

- Flip-Top Latching Head
- Tested Up to 75kV
- One Hand Operation
- Rotational Head
- Rapid Advance
- Ergonomically Balanced
- Ergonomic Pistol Grip Handle
- Weather Resistant Housing
- Overload Bypass Protection
- 5 Year Warranty on Tool, Battery & Charger

Due to material composition, the ratings are to be used as a guide. Actual capacity may vary due to "bypass" feature.



24-08

REC-S524H Replacement Blade





# REC-S524CC ROBO\*CUT™

8 Ton Cutting Tool with .95" Jaw Opening

## Specifications

Output	8 Ton
Weight	10 lbs. with Battery
Size	12.5"L x 12"H x 2.5"W
Jaw Opening	.95"

## Cutting Estimates

	BP-80
477 ACSR	90
1/2" Rebar	60
1/2" Ground Rod	60
3/8" Guy Wire	40

## Cutting Capacities

ACSR	477 MCM
Standard Guy Wire	5/8"
EHS Guy Wire	9/16"
Ground Rod	5/8"
Rebar (Sc 40)	5/8"

## Features

- Flip-Top Latching Head
- Tested Up to 75kV
- One Hand Operation
- Rotational Head
- Rapid Advance
- Ergonomically Balanced
- Ergonomic Pistol Grip Handle
- Weather Resistant Housing
- Overload Bypass Protection
- 5 Year Warranty on Tool, Battery & Charger

Due to material composition, the ratings are to be used as a guide. Actual capacity may vary due to "bypass" feature.



24C-08

REC-S524CC Replacement Blade



The **REC-S524CC** was designed to cut the toughest steel used in construction today. It can replace an entire tool kit, including several sizes of conventional bolt cutters, hacksaw, acetylene torches and cable cutters. The REC-S524CC was designed from the same hydraulic system as the REC-558U featuring a rapid advance ram for reduced cycle times.

The specially designed anvil style blades were made to cut EHS up to 9/16" and with the pull of the trigger, you can cut ACSR cables up to 477 MCM, standard guy wires to 5/8", and ground rods to 5/8". The specially designed flip-top latch and rotating head provide exceptional ease of use and maneuverability in tight working quarters. The REC-S524CC has an overload bypass, which will "kick out" when tool reaches 8 tons or is attempting to cut cables beyond its capacities.

For additional ordering information, please refer to page 10.



# REC-S540 ROBO\*CUT™

8 Ton Cutting Tool with .6" Jaw Opening



The **REC-S540** is designed to cut up to 1590 ACSR and regular guy wires and ground rod up to 5/8". The REC-S540 is ideal for aerial bucket work and trench operations. It features a two stage, rapid advance ram for reduced cycle times.

This cutter is made for one-handed operation. Simply remove the pin latch, place over cable, reinsert pin, and cut. A built-in bypass will pop off if the material is beyond the cutter's capacity. It is not recommended to cut hardened steel.

**NOTE:** DO NOT CUT EHS GUY WIRE OR CASE HARDENED STEEL RODS. SEE REC-S524CC, S-24CC, SP-24CC, S-32CC OR SP-32CC1.

For additional ordering information, please refer to page 10.

## Specifications

Output	8 Ton
Weight	14.6 lbs. with Battery
Size	17.5" L x 12.5" H x 2.5" W
Jaw Opening	1.6"

## Cutting Estimates

	BP-80
795 ACSR	60
3/4" Wire Rope	90
5/8" Rebar	60
5/8" Ground Rod	60
3/8" Guy Wire	40

## Cutting Capacities

Wire Rope	3/4"
Rebar (Sc 40)	5/8"
Rebar (Sc 60)	5/8"
Ground Rod	5/8"
ACSR	1590 MCM
Guy Wire	5/8"
Cu/Al Cable	1.5"

## Features

- Tested Up to 75kV
- One Hand Operation
- Rotational Head
- Rapid Advance
- Ergonomically Balanced
- Ergonomic Pistol Grip Handle
- Weather Resistant Housing
- Overload Bypass Protection
- 5 Year Warranty on Tool, Battery & Charger

Due to material composition, the ratings are to be used as a guide. Actual capacity may vary due to "bypass" feature.



40-14

REC-S540 Replacement Blade



# REC-S3550 ROBO\*CUT™

13 Ton Cutting Tool with 2" Jaw Opening

## Specifications

Output	13 Ton
Weight	23 lbs. with Battery
Size	21.5"L x 10.5"H x 3.5"W
Jaw Opening	2"

## Cutting Estimates

	BP-80
Wire Rope	60
Rebar, Ground & Anchor Rod	45
Cu & Al wire	35
ACSR	45
Standard Guy Wire	30

## Cutting Capacities

Wire Rope	1"
Soft Steel Bolts	1-1/4"
Rebar, Ground & Anchor Rod	3/4"
Cu & Al wire	2"
ACSR	2"
Standard Guy Wire	3/4"
Telephone & Lead Sheathed Cable	DO NOT CUT

## Features

- Tested Up to 75kV
- Rotational Head
- Rapid Advance
- Ergonomically Balanced
- Weather Resistant Housing
- Overload Bypass Protection
- Most Powerful Battery Operated Cutter
- 5 Year Warranty on Tool, Battery & Charger

Due to material composition, the ratings are to be used as a guide. Actual capacity may vary due to "bypass" feature.



The **REC-S3550** cuts ACSR, guy wire, wire rope, and ground rod. Powerful and portable with a 2" jaw opening. A latch-type jaw swings open to accept material to be cut. The head can be rotated for proper positioning of rod or cable. This is our most versatile cutter patterned after our S-55 hand operated cutter.

**NOTE:** WILL CUT ALL 795 ACSR CABLE, INCLUDING DRAKE.

For additional ordering information, please refer to page 10.



55A-10  
REC-S3550 Replacement Blade





# REC-P1 ROBO\*PUMP

10,000 psi Battery Powered 28.8 Volt Pump



The Huskie **REC-P1** is a 28.8 volt, battery operated hydraulic pump that runs on two 14.4 Volt BP-80 batteries. The REC-P1 is supplied with a push button remote control that allows the operator to advance, hold, and retract when needed. The user is never committed to a full cycle and can always back off at any time during the advance – even when the pump is under pressure. High pressure, non-conductive hose can be attached to a 360° moveable swivel port on the pump. This swivel port allows the user to position the hose to fit in confined aerial buckets and manholes.

Both batteries must be inserted in the pump to operate. It is recommended to operate the pump with a 10 foot hose, up to a maximum of 20 feet. A longer hose will cause cycle times to increase.

We recommend you specify the Huskie SC-Series flush face dripless couplers, as not to deplete the oil in the reservoir when changing heads.

For additional ordering information, please refer to page 10.

## Specifications

Output	10,000 psi
Weight	23 lbs. with 2 Batteries
Size	16"L x 6"H x 10"D

## Crimping Estimates

	2 BP-80s
Using a 10 ft. Hose and EP-60W on 1272 ACSR	12
No Load Cycle Time	Advance 25 Sec., Retract 30 Sec.

## Optional Accessories

FS-14	Foot Switch, p. 88
URH-14	Remote Handle, p. 88
REC-P1CASE	Steel Carrying Case, p. 94

## Features

- Powerful 28.8 Volt
- Operate Up to Single Acting 60 Ton Press
- Adjustable 10,000 psi
- Eliminates the Need for AC Power
- Compact and Portable
- 5 Year Warranty on Tool, Battery & Charger



# BP-80

Huskie Tools Lithium-Ion Battery

## Features

- High Capacity 3.0Ah Battery Pack
- 50% Longer Run Time as Compared to NiCad
- No Memory Effect
- Lightweight Battery Pack
- Impact Resistant Housing
- The Performance is Minimally Affected by Extreme Temperatures
- Minimal Self-Discharge
- Non-Hazardous Chemistry and Environmentally Safe
- Recyclable with the RBRC Recycling Program
- 5 Year Warranty



*See Charger, CH-90 on next page with cord options*



The **BP-80** is now the battery of choice for all of your Huskie Tools products. Sticking to our motto, "All for one, one for all", the BP-80 works all of our battery operated tools, past and present. There is a 50% longer run time as compared to the NiCad battery.

For additional ordering information, please refer to page 10.



# CH-90

## Tri-Chemistry Charger



The **CH-90** is a Tri-Chemistry charger able to charge the BP-80 and all previous Huskie Tool Batteries. During its 1 hour charge time, the CH-90 monitors battery temperature and battery voltage for correct charging.

The design of the charger allows for stability while in motion and includes a reconditioning button for Ni-Cd and Ni-MH memory effect.

For additional ordering information, please refer to page 10.

### Features

- 110V AC Power Cord
- Tri-Chemistry Charger Able to Charge All Huskie Tools Batteries
- Reconditioning Feature to Accommodate Ni-Cd and Ni-MH Memory Effect
- Maintenance Trickle Charge for Ni-Cd and Ni-MH Batteries
- UL/CUL Agency Approvals
- Monitors Battery Temperature and Battery Voltage for Correct Charging
- 5 Year Warranty
- 1 Hour Charge Time

### Order Data

CH-90	AC Charger
CH-90DC	DC Charger
CH-ACC	AC Charger Cord
CH-DCC	DC Charger Cord
CH-90BASE	Charger Base Only



CH-DCC  
DC Charger Cord



CH-ACC  
AC Charger Cord







Tools as **RUGGED** and **RELIABLE**  
as the linemen who use them.





**HYDRAULIC COMPRESSION TOOLS**



# Hydraulic Compression Tools



**Huskie Tools Ambassador**  
**Neal Walker, Distribution**  
**Line Technician**  
Company: Duke Energy  
Shelby, North Carolina

*Neal holds the EP-510C.*

## Hydraulic Compression Pgs. 53-55



## Remote Compression Heads Pgs. 56-60

### EP-60W P. 61



### EP-60D P. 62



### EP-100WC P. 63



## Compression Dies Pgs. 64-69



## Die Cases P. 69



## Gauges P. 70





# CN-258

6 Ton Compression Tool with Rubber Boot – .95" Jaw Opening



Accepts "W", "O" and "X"  
Type Dies

- See Page 64 for  
Available Huskie Dies

## Specifications

Output	6 Ton
Weight	8.5 lbs.
Length	21"
Jaw Opening	.95"

## Connector Range

Lugs	#6-500 MCM Cu
Splices	#6-300 MCM Al
H-Taps	4/0-4/0

## Optional Accessory

HT58CUT	Cutter Die, p. 64
---------	-------------------

## Features

- Two-Stage Rapid Advance
- External Pressure Adjustment

Huskie's **CN-258** is used for service entrance connections up to 4/0, and its bypass cartridge assures all compressions. A two-stage, rapid advance pumping system and threaded collar save compression strokes and time.

The nest dies are D-3, and can be changed with other Kearney "O" type dies. If you wish to use Burndy "W" type dies, simply slip the "W" type over the D-3 nest die and snap them into the locked position. Huskie Tools carries a wide range of market equivalent dies. Pressure can be checked with Huskie's PG-15 pressure gauge. The tool comes complete with a carrying case.

# EP-630A

6.2 Ton Dieless Crimping Tool – .9" Jaw Opening



## Specifications

Output	6.2 Ton
Weight	11.5 lbs.
Length	22"
Jaw Opening	.9"
Center Opening	1.25"

## Connector Range

#10 AWG-500 MCM

## Features

- Two-Stage Rapid Advance
- External Pressure Adjustment

The **EP-630A** is commonly used by electric utilities and contractors who prefer dieless compression to circumferential compression.

The operator simply positions a connector in the jaws and pumps until the tool bypasses at 6.2 tons of output. Three moveable nibs crimp the connector against a fourth stationary nib. A carrying case is included.

**NOTE:** The EP-630A was designed to crimp Anderson style connectors, and other brand connectors manufactured to ANSI C119.4.



# EP-750A

6.2 Ton Flip-Top Dieless Crimping Tool – with 1.5" Jaw Opening

## Specifications

Output	6.2 Ton
Weight	11.5 lbs.
Length	23"
Jaw Opening	1.5"

## Connector Range

#10 AWG-750 MCM

## Features

- Designed to Crimp Anderson Connectors & Other Brand Mfg. to ANSI C119.4
- Rapid Advance
- Flip-Top Head Design
- Eliminates the Need for Dies



The **EP-750A** operates the same as the EP-630A, but has a larger connector/cable capacity. Larger cables can be inserted and easily removed by opening the flip-top head. A carrying case is included.

**NOTE:** The EP-750A was designed to crimp Anderson style connectors, and other brand connectors manufactured to ANSI c119.4.

# EP-410

12 Ton Compression Tool with Rubber Boot – 1" Jaw Opening

Accepts "U" Type Dies

- See Page 65 for Available Huskie Dies

## Specifications

Output	12 Ton
Weight	13 lbs.
Length	23"
Jaw Opening	1"

## Connector Range

Lugs	#8-750 MCM Cu
Splices	#10-400 MCM Cu

## Features

- Protective Rubber Boot on "C" Head
- External Pressure Adjustment



The **EP-410**, hand operated, compression tool features a two stage rapid advance pumping system. It accepts all U-type dies currently manufactured for 12 ton tools on the market.

Consult your connector manufacturer for exact cable, connector, and die combinations. Huskie stocks a variety of dies, simply specify the manufacturer's die and connector numbers when contacting your dealers. A carrying case is included.



# EP-430

12 Ton Compression Tool with Rubber Boot – 1-3/16" Jaw Opening



The **EP-430** is unique in that it has a large jaw opening of 1-3/16" and is able to splice up to 600 MCM. This tool was designed for the electrical contractor or electric utility lineman who is confronted with larger cable diameters and larger connectors. Similar competitive tools are limited to a .95" jaw opening that drastically reduces their connecting range. Most internal hydraulic components are the same as the EP-410 and EP-510. A carrying case is included.

Accepts "U" Type Dies

- See Page 65 for Available Huskie Dies

## Specifications

Output	12 Ton
Weight	13.5 lbs.
Length	24"
Jaw Opening	1-3/16"

## Connector Range

Lugs	Up to 750 MCM Cu
Splices	Up to 600 MCM Cu

## Features

- Protective Rubber Boot on "C" Head
- External Pressure Adjustment

# EP-510C

12 Ton Compression Tool with Rubber Boot – 1.65" Jaw Opening



Accepts "U" Type Dies

- See Page 65 for Available Huskie Dies

## Specifications

Output	12 Ton
Weight	16.5 lbs.
Length	25"
Jaw Opening	1.65"

## Connector Range

Lugs and Splices	Up to 750 MCM Al and Cu
------------------	-------------------------

## Features

- Protective Rubber Boot on "C" Head
- External Pressure Adjustment
- UL Classified

Huskie's **EP-510C** was engineered to accommodate all U-type dies currently used in existing 12 ton tools. It is one of Huskie's most versatile tools since it takes a full range of connectors and lugs to 750 MCM. The jaw opening is 1.65" to accept larger splices up to 750 MCM. A carrying case is included. The EP-510C output tonnage is adjustable to 14 tons for some specific grounding applications.





# EP-510K

12 Ton Compression Tool with Rubber Boot – 1.5" Jaw Opening

Accepts "WH-2" and  
"WH-3" Type Dies  
• See Page 66 for  
Available Huskie Dies

## Specifications

Output	12 Ton
Weight	17 lbs.
Length	26"
Jaw Opening	1.5"

## Connector Range

Lugs	Up to 1033 MCM Strand
Splices	477 ACSR

## Order Data

EP-510K	Compression Tool
PG-4K	Test Gauge with TDK Dies

## Optional Accessory

UDK-1	"U" Die Adapter, p. 92
-------	------------------------

## Features

- Protective Rubber Boot on "C" Head
- External Pressure Adjustment



The Huskie **EP-510K** was designed to accept Kearney dies commonly used in their models WH-2, PH-2, and WH-3 hydraulic tools. It features our exclusive replaceable bypass cartridge to facilitate shop repairs and eliminate costly down time. A carrying case is included.

**NOTE:** Tool output tonnage can be determined by using our model PG-4 pressure gauge with model TDK-1.



UDK-1

# CN-58H

6 Ton Remote Compression C-Head with Rubber Boot – .95" Jaw Opening

Accepts "W", "O" and "X"  
Type Dies  
• See Page 64 for  
Available Huskie Dies

## Specifications

Output	6 Ton
Weight	6 lbs.
Length	12"
Jaw Opening	.95"

## Connector Range

Lugs	#6-500 MCM Cu
Splices	#6-4/0 Al
H-Taps	4/0-4/0 Al

## Features

- 3/8" Male Screw Type Coupler Provided
- Protective Rubber Boot on "C" Head



The **CN-58H** remote operated "C" head requires an external pumping source of 10,000 psi. It accepts Kearney "O" type and Burndy "W" type dies. It is a service entrance compression tool and the smallest of our compression tool line. The head is lightweight for easy handling in hot stick applications.

The tool is supplied with a 3/8" male screw type coupler and a carrying case.

**NOTE:** When using any of these high-pressure tools, always use 10,000 psi rated non-conductive hose (NC-16 series).



# EP-630HA

6.2 Ton Dieless Remote Crimping Head with Rubber Boot – .9" Jaw Opening



The **EP-630HA** is a dieless remote head that requires an external 10,000 psi pumping source. It is designed to crimp Anderson connectors #10 str - 500 MCM bare Al and #10 sol - 500 MCM bare Cu. The EP-630HA is mostly used by electrical contractors who prefer dieless compression to circumferential compression.

This tool is supplied with a 3/8" male, screw type coupler and carrying case.

**NOTE:** The EP-630HA was designed to crimp Anderson style connectors, and other brand connectors manufactured to ANSI C119.4.

## Specifications

Output	6.2 Ton
Weight	6.5 lbs.
Length	10" with Coupler
Jaw Opening	.9"
Width	4.5"
Center Opening	1.25"

## \*Connector Range

#10 AWG-500 MCM Cu/Al

## Features

- \*Designed to Crimp Anderson Connectors & Other Brand Mfg. to ANSI C119.4
- Eliminates the Need for Dies
- Protective Rubber Boot on "C" Head

# EP-750HA

6.2 Ton Flip-Top Dieless Remote Crimping Head – 1.5" Jaw Opening



The Huskie **EP-750HA** dieless, Anderson style head has a flip-top opening and a pull-pin locking mechanism to accept larger connectors up to 750 MCM. Output force is 6.2 tons, and 10,000 psi external pumping source is required. The EP-750HA is supplied with a 3/8" male, screw type coupler and a carrying case.

**NOTE:** THE EP-750HA was designed to crimp Anderson style connectors, and other brand connectors manufactured to ANSI C119.4.

## Specifications

Output	6.2 Ton
Weight	6.5 lbs.
Length	10.5" with Coupler
Width	5.5"
Jaw Opening	1.5"

## \*Connector Range

#10 AWG-750 MCM Cu/Al

## Features

- \*Designed to Crimp Anderson Connectors & Other Brand Mfg. to ANSI C119.4
- Flip-Top Head Design
- Eliminates the Need for Dies



# EP-410H

12 Ton Remote Compression C-Head with Rubber Boot – 1" Jaw Opening

Accepts "U" Type Dies  
• See Page 65 for  
Available Huskie Dies

## Specifications

Output	12 Ton
Weight	8-1/4 lbs.
Length	10"
Jaw Opening	1"

## Connector Range

Lugs	#8-750 MCM Cu
Splices	#10-400 MCM Cu

## Feature

- Protective Rubber Boot on "C" Head



The **EP-410H** is a traditional C-head with a one-inch jaw opening. It will accept all "U" type dies currently used in 12 ton tools on today's market.

A 10,000 psi external pump is required to operate the C-head. The output pressure is 12 tons when the pump is set at 10,000 psi. After a compression is made on a lug or sleeve, an internal ram spring retracts the jaw when the pump pressure is relieved. The tool is supplied with a standard 3/8" male, screw type coupler but can be fitted with an opposite female coupler if requested. Carrying case included.

**NOTE:** When using any of these high-pressure tools, always use 10,000 psi rated non-conductive hose (NC-16 series).

# EP-410HT

12 Ton Remote Titanium Compression C-Head – 1" Jaw Opening

Accepts "U" Type Dies  
• See Page 65 for  
Available Huskie Dies

## Specifications

Output	12 Ton
Weight	5 lbs.
Length	10"
Jaw Opening	1"

## Connector Range

Lugs	#8-750 MCM Cu
Splices	#10-400 MCM Cu

## Optional Accessories

HTADPT	Hot Stick Adapter
--------	-------------------

## Features

- Extremely Lightweight Titanium
- Ideal for Hot Stick Applications
- All the Same Features as the EP-410H Model



The unique, lightweight titanium head of the **EP-410HT** reduces its weight to just five pounds. This is an ideal weight for Hot Stick handling since it is easy to lift and effortless to control while making connections. Though more expensive than conventional 12 ton tools, operator preference and performance when handling this tool will save time and investment over the life of the product. The tool is supplied with a standard 3/8" male, screw type coupler but can be fitted with an opposite female coupler if requested. A carrying case is included.

**NOTE:** When using any of these high-pressure tools, always use 10,000 psi rated non-conductive hose (NC-16 series).





# EP-430H

12 Ton Remote Compression C-Head with Rubber Boot – 1-3/16" Jaw Opening



Accepts "U" Type Dies

- See Page 65 for Available Huskie Dies

## Specifications

Output	12 Ton
Weight	10 lbs.
Length	11"
Jaw Opening	1-3/16"

## Connector Range

Lugs	Up to 750 MCM Cu
Splices	Up to 600 MCM Cu

## Feature

- Protective Rubber Boot on "C" Head

The **EP-430H** is a remote C-head that requires an external 10,000 psi pumping source for operation. This unit has a larger jaw opening than our EP-410H. The 1-3/16" opening allows the user to compress larger splices up to 600 MCM. The EP-430H is a single-acting, spring return tool. Its trim design allows for easy handling in field applications. This unit is supplied with a 3/8" male, screw type coupler, metal carrying case and die tray. We recommend the use of our non-conductive, high pressure hose.

The EP-430H accepts "U" type dies designed to fit all 12 ton tools. Unique features include a knurled handle shank, a pull die release button on top of the C-head, and a push button die release on the opposite jaw.

# EP-510HC

12 Ton Remote Compression C-Head with Rubber Boot – 1.65" Jaw Opening



Accepts "U" Type Dies

- See Page 65 for Available Huskie Dies

## Specifications

Output	12 Ton
Weight	11 lbs.
Length	12-1/4"
Jaw Opening	1.65"

## Connector Range

Lugs	750 MCM Cu
Splices	750 MCM Cu

## Feature

- Protective Rubber Boot on "C" Head

The **EP-510HC** is a remote C-head that requires an external 10,000 psi pumping source. It accepts all "U" type dies used with conventional 12 ton compression tools. The larger jaw opening of 1.65" accepts conductors and mid-span sleeve connections up to 750 MCM. The EP-510HC is supplied with a screw type, 3/8" male coupler, metal carrying case, and die tray. We recommend the use of our non-conductive high pressure hose.

**NOTE:** When using any of these high-pressure tools, always use 10,000 psi rated non-conductive hose (NC-16 series).



# EP-510HK

12 Ton Remote Compression C-Head with Rubber Boot – 1.5" Jaw Opening

Accepts "WH-2" and  
"WH-3" Type Dies  
• See Page 66 for  
Available Huskie Dies

## Specifications

Output	12 Ton
Weight	13.5 lbs.
Length	14"
Jaw Opening	1.5"

## Connector Range

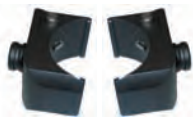
Lugs	Up to 1033 MCM Stranded
Splices	477 ACSR

## Feature

- Protective Rubber Boot on "C" Head

## Optional Accessory

UDK-1	"U" Die Adapter, p. 93
-------	------------------------



UDK-1



The **EP-510HK** is a Kearney style tool which accepts PH-2, WH-2, and WH-3 style dies.

It has 12 tons of output and is used for crimping up to 750 MCM lugs or splices. An external 10,000 psi pumping source is needed to develop 12 tons of compression force. The EP-510HK comes complete with a 3/8" male, screw type coupler and carrying case.

**NOTE:** When using any of these high-pressure tools, always use 10,000 psi rated non-conductive hose (NC-16 series).

# EP-610H

15 Ton Remote Compression C-Head – 2" Jaw Opening

Accepts "P" Type Dies  
• See Page 66 for  
Available Huskie Dies

## Specifications

Output	15 Ton
Weight	14.5 lbs.
Length	14.5"
Jaw Opening	2" (1.5" with "U" Die Adapter)

## Connector Range

Aluminum	#8 AWG-1250 MCM
Copper	#8 AWG-1500 MCM

## Feature

- Also Available for T&B Style 15 Ton Dies (Model EP-610TB)

## Optional Accessories

PU-15	"U" Die Adapter, p. 93
-------	------------------------



PU-15



The **EP-610H** is a remote C-head that requires an external 10,000 psi pumping source. It accepts all Huskie HT61 series and Burndy "P" type dies used in the Y-46. When used with a Huskie PU-15 die adapter it will accept all "U" type dies used with any 12 ton tool. This tool is primarily used for cables above 750 MCM or in cases where additional tonnage is required to compress larger lugs, terminals and sleeves on tension connections. It is most always used on larger underground cables up to 1000 MCM. The EP-610H is supplied with a 3/8" male, screw type coupler and carrying case.

**NOTE:** When using any of these high-pressure tools, always use 10,000 psi rated non-conductive hose (NC-16 series).



# EP-60W (Steel), EP-60WT (Titanium)

## 60 Ton Compression Head



Accepts "HA60-SERIES"  
Type Dies

- See Page 67 for  
Available Huskie Dies

### Specifications

Output	60 Ton
Weight	45 lbs. (Steel) 33 lbs. (Titanium)
Size	6"W x 17"H
Cable Capacity	2.4" O.D.
Die Style	HA60-Series
Ram Stroke	1.5" Travel
Oil Volume	312 cc

### Connector Range

Lugs	Up to 2000 MCM Cu/Al
Splices	Up to 2500 MCM Cu/Al

### Order Data

EP-60W	60 Ton Single Acting Compression Head
EP-60WT	Titanium Model

### Features

- Designed for ACSR & ACAR Transmission and Distribution Cable
- Lightest 60 Ton Presses in the Industry
- Ultra Light Titanium Model Available
- Extremely Portable

The **EP-60W** is a single acting, 60 ton press that is designed to compress sleeves and lugs on ACSR and ACAR transmission and distribution cables. They are also ideal for substation construction and are operable from any 10,000 psi pumping source with proper oil capacity. These tools are made to be portable for easy maneuverability, unlike other brands.

The EP-60W series will readily accept any shell type dies currently used with Alcoa or Burndy 60 ton presses. Dies not listed can be made to specification; consult Huskie for more information.

Huskie also offers the lightest 60 ton presses in the industry. The EP-60W series is also offered in titanium. Titanium has the strength of steel but weighs nearly 30 percent less. Due to its lighter weight and the tool's portable design, the chance of back and muscle strain is greatly reduced. The titanium 60 ton press is easily maneuvered where heavy steel presses are almost impossible to operate, making it an ideal tool for jobs such as helicopter line installations.

**NOTE:** When using any of these high-pressure tools, always use 10,000 psi rated non-conductive hose (NC-16 series).





# EP-60D (Steel), EP-60DT (Titanium)

## 60 Ton Double Acting Compression Head

Accepts "HA60-SERIES"  
Type Dies

- See Page 67 for  
Available Huskie Dies

### Specifications

Output	60 Ton
Weight	47 lbs. (Steel) 34 lbs. (Titanium)
Size	6"W x 17"H
Cable Capacity	2.4" O.D.
Die style	HA60-Series
Ram Stroke	1.5" Travel
Oil Volume	303 cc

### Connector Range

Lugs	Up to 2000 MCM Cu/Al
Splices	Up to 2500 MCM Cu/Al

### Order Data

EP-60D	60 Ton Double Acting Compression Head
EP-60DT	Titanium Model

### Features

- Designed for ACSR & ACAR Transmission and Distribution Cable
- Double Acting Hydraulic Cylinder for Quicker Return Times
- Ultra Light Titanium Model Available
- Extremely Portable



EP-60DT

The **EP-60D** series is a double acting model. Double acting tools will eliminate the possibility of the tool jamming. Double acting means hydraulically advancing the ram to build the proper tonnage, then the hydraulic pressure is reversed to retract the ram. This will ensure the ram to retract without having to pry the jaws apart to release them and it will also retract much faster than single acting spring release tools.

Titanium has the strength of steel but weighs nearly 30% less. Due to its lighter weight and the tool's portable design, the chance of back and muscle strain is greatly reduced. The titanium 60 ton press is easily maneuvered where heavy steel presses are almost impossible to operate making it an ideal tool for jobs such as helicopter line installations.

**NOTE:** When using any of these high-pressure tools, always use 10,000 psi rated non-conductive hose (NC-16 series).



# EP-100WC and EP-200WA

100 and 200 Ton Compression Head



EP-100WC Accepts "HA100-SERIES" Type Dies

- See Page 67 for Available Huskie Dies

## Specifications EP-100WC

Output	100 Ton
Weight	96 lbs.
Size	7-1/2"W x 14"H
Die Style	HA100-Series
Ram Stroke	.98" Travel
Oil Volume	314 cc

## Specifications EP-200WA

Output	200 Ton
Weight	190 lbs.
Size	14"W x 17"H
Die Style	HA200-Series
Ram Stroke	1.57" Travel
Oil Volume	1134 cc

## Features

- Designed for Full Tension Transmission and Substation Connections
- Double Acting Hydraulic Cylinder for Quicker Return Times
- Lightest Weight Models in Their Class
- Removable Die Caps for Easy Cable Insertion

The **EP-100WC** and **EP-200WA** are 100 and 200 ton compression heads for full tension, transmission and substation connections and require an external 10,000 psi pumping source.

The EP-100WB will accept shell type dies currently used with Alcoa 100 ton compression heads. Dies for 200 ton presses are considered special application and must be engineered to the connector manufacturers specifications. Consult factory for these dies. Both compression heads are double acting and designed to operate from Huskie Tools pump models R14EAD, HPG-4 or any 3/4 HP high-pressure, double acting pump with the proper oil capacity.

Double acting means hydraulically advancing the ram to build proper tonnage, then the hydraulic pressure is reversed to retract the ram. This will eliminate all possibilities of the connector hanging up or the tool jamming. The EP-200WA is the only 200 ton press on the market today and both are the lightest weight models in their class. Both models have removable die caps for easy connector positioning and 3/8" screw-type couplers.

**NOTE:** When using any of these high-pressure tools, always use 10,000 psi rated non-conductive hose (NC-16 series).



# HT58-SERIES

Equivalent to Burndy "W" Type Dies for 4-6 Ton Tools

## Features

- Fits All Existing Tools Accepting "W" Type Dies
- Marked with Huskie and Equivalent Burndy "W" Die Number
- Nickel Plated

HUSKIE	BURNDY Equivalent	HUSKIE	BURNDY Equivalent
HT58AE	W-K840	HT58DE	W-236
HT58BX	W-161	HT58DG	W-238
HT58BZ	W-162	HT58DH	W-239
HT58CB	W-163	HT58DK	W-241
HT58CD	W-164	HT58DM	W-243
HT58CE	W-165	HT58DP	W-245
HT58CF	W-166	HT58DT	W-247
HT58CG	W-167	HT58DV	W-248
HT58CM	W-171	HT58DW	W-249
HT58G	W-BG	HT58DY	W-251
HT58J	W-C	HT58KA	W-687
HT58AK	W-O	HT58KH	W-702
HT58CUT	CUTTER	HT58AF	W-L
		HT58K	WKK

HUSKIE	BURNDY Equivalent
HT58AW	W-2CRT
HT58AU	W-4CRT
HT58AT	W-5CRT
HT58AY	W-25RT
HT58AZ	W-26RT
HT58BA	W-27RT
HT58BC	W-28RT
HT58BE	W-29RT
HT58BF	W-30RT
HT58BJ	W-31RT
HT58BK	W-32RT
HT58BL	W-34RT

Huskie 6 Ton Die	Burndy 6 Ton Die	Nicopress
HT58BX	W-161	J
HT58BZ	W-162	M & P
HT58CB	W-163	T
HT58CM	W-171	X

HUSKIE	CSA Equivalent
HT58PA	CSA-20
HT58PB	CSA-22
HT58PC	CSA-24



# HT-SERIES

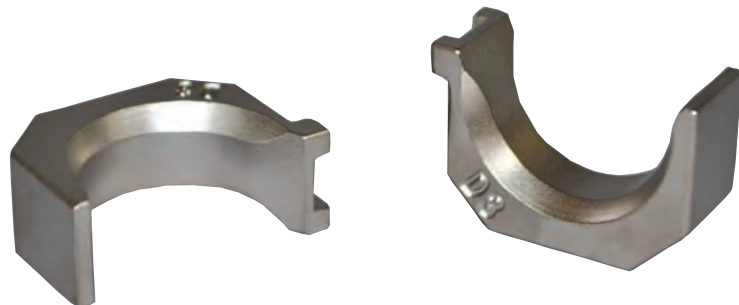
Equivalent to Kearney "O" Type Dies for 4-6 Ton Tools

## Features

- Fits All Existing Tools Accepting "O" Type Dies
- Stamped with Kearney Die Size
- Nickel Plated

HUSKIE	KEARNEY Equivalent	HUSKIE	KEARNEY Equivalent
HT-B	B	HT-510	510 (HEX)
HT-D	D	HT-635	635 (HEX)
HT-D3	D3	HT-747	747 (HEX)
HT-J	J	HT-316	3/16
HT-K	K	HT-14	1/4
HT-O	O	HT-516	5/16
HT-P	P	HT-38	3/8
HT-T	T	HT-12	1/2
HT-737	737	HT-916	9/16
HT-781	781	HT-1932	19/32
HT-840	840	HT-58-1	5/8-1
HT-845	845	HT-1116	11/16

HUSKIE	CSA Equivalent
HTCSA-20	CSA-20
HTCSA-22	CSA-22
HTCSA-24	CSA-24





# HT41-SERIES

Equivalent to Burndy and Kearney "U" Type Dies for 12 Ton Tools



## Features

- Fits All Existing Tools Accepting "U" Style Dies
- Marked with Huskie and Equivalent Burndy "U" Die Number, or Alcoa "B" Die Number, or Kearney Die Size
- Die Nest Engraved with Huskie Die Number Suffix

HUSKIE	ALCOA Equivalent	HUSKIE	ALCOA Equivalent	HUSKIE	CSA Equivalent	HUSKIE	CSA Equivalent
HT4107	74SH-03SH	HT4131	72AH	HT41PA	CSA-20	HT41PH	CSA-24CU
HT4108	75SH-05SH	HT4132	73AH-08AH	HT41PB	CSA-22	HT41PI	CSA-24CU
HT4109	76SH	HT4140	07CD	HT41PC	CSA-24	HT41PJ	CSA-28CU
HT4111	11AH	HT4141	08CD	HT41PD	CSA-26	HT41PK	CSA-30WCU
HT4120	20AH-14AH	HT4142	09CD	HT41PE	CSA-28	HT41PM	CSA-1
HT4128	74AH-10AH	HT4155	72SH-01SH	HT41PF	CSA-30W	HT41PN	CSA-2
HT4129	75AH-12AH	HT4156	73SH	HT41PL	CSA-20CU		
HT4130	76AH	HT4180	13AH-80EA	HT41PG	CSA-22CU		

HUSKIE	BURNDY Equivalent	HUSKIE	BURNDY Equivalent	HUSKIE	BURNDY Equivalent	HUSKIE	KEARNEY Equivalent
HT41G	U-BG	HT41DG	U-238	HT41AT	U5CRT	HT41KA	1/4
HT41J	U-C	HT41DH	U-239	HT41AY	U25RT	HT41KB	3/8
HT41V	U-D	HT41DL	U-242	HT41AZ	U26RT	HT41KC	5/16
HT41X	U-D3	HT41DM	U-243	HT41BA	U27RT	HT41KD	1/2
HT41Y	U-E	HT41DP	U-245	HT41BC	U28RT	HT41KE	9/16
HT41Z	U-F	HT41DT	U-247	HT41BE	U29RT	HT41KF	19/32
HT41AB	U-H	HT41DV	U-248	HT41GF	U2CABT	HT41KG	5/8-1
HT41AF	U-L	HT41DW	U-249	HT41GM	U4CABT	HT41KH	11/16
HT41AG	U-M	HT41DY	U-251	HT41GE	U6CABT	HT41KI	3/4
HT41AJ	U-N	HT41DZ	U-252	HT41GL	U8CABT	HT41KK	29/32
HT41AK	U-O	HT41EK	U-261	HT41BF	U30RT	HT41KL	15/16
HT41AM	U-R	HT41FG	U-305	HT41BJ	U31RT	HT41KM	1-2
HT41BX	U-161	HT41FM	U-316	HT41BK	U32RT	HT41KN	1-1/8-2
HT41BZ	U-162	HT41FN	U-317	HT41BL	U34RT	HT41KO	1-1/2-2
HT41CB	U-163	HT41FU	U-321	HT41BM	U36RT	HT41KP	510
HT41CD	U-164	HT41FX	U-327	HT41BP	U39RT	HT41KQ	572
HT41CE	U-165	HT41GK	U-373	HT41EX	U25ART	HT41KR	635
HT41CF	U-166	HT41GX	U-468	HT41EY	U26ART	HT41KS	737
HT41CG	U-167	HT41HM	U-490	HT41GW	U27ART	HT41KT	747
HT41CJ	U-168	HT41JM	U-654	HT41EZ	U28ART	HT41KU	781
HT41CK	U-169	HT41JN	U-655	HT41FW	U29ART	HT41KV	BKT
HT41CL	U-170	HT41JP	U-658	HT41GZ	U30ART	HT41AE	840
HT41CT	U-203	HT41JR	U-659	HT41FA	U31ART	HT41U	U
HT41DE	U-236	HT41KJ	U-705	HT41HH	U32ART	HT41KX	727
HT41DF	U-237	HT41LG	U-788	HT41FB	U34ART		
		HT41NC	U-997	HT41HG	U36ART		
		HT41AE	U-K840	HT41LJ	U39ART2		
		HT41AX	U1CRT	HT41CUT	Cutter Dies		
		HT41AW	U2CRT	HT41TEST	Test Dies		
		HT41AV	U3CRT				
		HT41AU	U4CRT				



# HTK-SERIES

Equivalent to Kearney "WH-2" (10.7 Ton) & "WH-3" (12 Ton) Type Dies

## Features

- Fits All Existing Tools Accepting "O" Type Dies
- Stamped with Kearney Die Size
- Nickel Plated



HUSKIE	KEARNEY Equivalent	HUSKIE	KEARNEY Equivalent	HUSKIE	KEARNEY Equivalent	HUSKIE	KEARNEY Equivalent
HTK	BKT	HTK-510	510	HTK-14	1/4	HTK-34H	3/4 (HEX)
HTK-C	C	HTK-572	572	HTK-516	5/16	HTK-2932H	29/32 (HEX)
HTK-D	D	HTK-635	635	HTK-38	3/8	HTK-1516	15/16
HTK-N	N	HTK-727	727	HTK-12	1/2	HTK-1-2H	1-2 (HEX)
HTK-N-2	N (WH-3 Only)	HTK-737	737	HTK-916	9/16	HTK-1-18-2H	1-1/8
HTK-O	O	HTK-747	747	HTK-1932	19/32	HTK-1-516H	1-5/16 (HEX)
HTK-P	P	HTK-781	781	HTK-58-1	5/8-1	HTK-1-12H	1-1/2 (HEX)
HTK-U	U	HTK-840	840	HTK-1116	11/16	HTK-1-12H-3	1-1/2 (WH-3 Only)

# HT61-SERIES

Equivalent to Burndy "P" Type Dies for 15 Ton Tools

## Features

- Fits All Existing Y46 Heads Accepting "P" Type Dies
- Marked with Huskie and Equivalent Burndy "P" Type Dies
- Black Oxide Finish
- Polished Die Nest

HUSKIE	BURNDY Equivalent	HUSKIE	BURNDY Equivalent
HT61BP	P39RT	HT61FC	P39ART
HT61BR	P40RT	HT61HJ	P40ART
HT61BU	P44RT	HT61FD	P44ART
HT61BV	P46RT	HT61AC	PKR
HT61KX	P-724	HT61AJ	PN
PU-15	DIE ADAPTER		

HUSKIE	CSA Equivalent
HT61PF	CSA-30
HT61PK	CSA-30CU
HT61PO	CSA-32
HT61PP	CSA-32CU
HT61PQ	CSA-34
HT61PR	CSA-34CU



# HA60-SERIES

Equivalent to Alcoa 60 Ton Dies



## Features

- Fits All Existing 60 Ton Presses Accepting 60 Ton Shell Type Dies
- Marked with Huskie and Equivalent Alcoa Catalog Number
- Black Oxide Finish

HUSKIE	ALCOA Equivalent	HUSKIE	ALCOA Equivalent
HA60-01	6010SH	HA60-27	6040AH
HA60-02	6012SH	HA60-28	6074AH
HA60-03	6014SH	HA60-29	6075AH
HA60-04	6016SH	HA60-30	6076AH
HA60-05	6018SH	HA60-40	6007CD
HA60-06	6020SH	HA60-41	6008CD
HA60-07	6074SH	HA60-42	6009CD
HA60-08	6075SH	HA60-43	6010CD
HA60-09	6076SH	HA60-44	6011CD
HA60-20	6020AH	HA60-45	6012CD
HA60-21	6024AH	HA60-46	6013CD
HA60-22	6027AH	HA60-47	6014CD
HA60-23	6030AH	HA60-48	6015CD
HA60-24	6034AH	HA60-49	6016CD
HA60-25	6036AH	HA60-50	6017CD
HA60-26	6038AH		

# HA100-SERIES

Equivalent to Alcoa 100 Ton Dies



## Features

- Fits All Existing 100 Ton Presses Accepting 100 Ton Shell Type Dies
- Marked with Huskie and Equivalent Alcoa Catalog Number
- Black Oxide Finish

HUSKIE	ALCOA Equivalent	HUSKIE	ALCOA Equivalent	HUSKIE	ALCOA Equivalent
HA100-01	10010SH	HA100-24	10034AH	HA100-41	10010CD
HA100-02	10012SH	HA100-25	10036AH	HA100-42	10009CD
HA100-03	10014SH	HA100-26	10038AH	HA100-43	10010CD
HA100-04	10016SH	HA100-27	10040AH	HA100-44	10011CD
HA100-05	10018SH	HA100-28	10074AH	HA100-45	10012CD
HA100-06	10020SH	HA100-29	10075AH	HA100-46	10013CD
HA100-07	10074SH	HA100-30	10076AH	HA100-47	10014CD
HA100-08	10075SH	HA100-34	10042AH	HA100-48	10015CD
HA100-20	10020AH	HA100-36	10044AH	HA100-49	10016CD
HA100-21	10024AH	HA100-37	10046AH	HA100-50	10017CD
HA100-22	10027AH	HA100-38	10048AH	HA100-51	10018CD
HA100-23	10030AH	HA100-40	10007CD	HA100-52	10019CD
				HA100-53	10020CD





# Huskie Tools Die Chart

**Huskie Dies** are configured to be equivalent to Burndy dies of respective size. When using Huskie HT series dies consult the connector manufacturer for their recommended die cross referencing and application instructions. All Huskie dies are machined or cast from solid steel stock and case hardened to 45-50 HRC and are guaranteed for 10,000 operations. These dies are also marked with HT numbers and Burndy cross reference numbers to make cross referencing easy and less confusing. The following chart lists Huskie and equivalent Burndy numbers for reference only. Other manufacturer die numbers are also listed to aid the user in selecting the proper die cross reference numbers when using a particular connector. All connectors are different and the connector manufacturer should be consulted in each case. Many manufacturers offer different size connectors for the same wire size. Huskie Tools, Inc. is not responsible in the event of misuse or misapplication of die sets. Huskie Tools is not a connector manufacturer, but a tool and die supplier.

**FOR REFERENCE ONLY! CONSULT YOUR CONNECTOR MANUFACTURER FOR EXACT CABLE, CONNECTOR AND DIE SELECTION.**

Approximate Cu	Conductor Range Al	Die Color Code	Huskie Die Set Catalog Number	Burndy Index	Burndy Die Set Catalog Number	T & B Index
6 AWG	8WG	BLUE	H41AT/HT41GL	7/374	U5CRT/U8CABT	24
4 AWG	6 AWG	GREY	HT41AU/HT41GE	8/346	U4CRT/U6CABT	29
2 AWG		BROWN	HT41AW	10	U2CRT	33
1 AWG	4 AWG	GREEN	HT41AX	11	U1CRT	37
	4 AWG	GREEN	HT41GM	375	U4CABT	37
1/0 AWG	2 AWG	PINK	HT41AY	12	U25RT	42H
	2 AWG	PINK	HT41GF	348	U2CABT	42H
2/0 AWG		BLACK	HT41AZ	13	U26RT	45
3/0 AWG		ORANGE	HT41BA	14	U27RT	50
	1/0 AWG	TAN	HT41EX	296	U25ART	50
4/0 AWG		PURPLE	HT41BC	15	U28RT	54H
	2/0 AWG	OLIVE	HT41EY	297	U26ART	54H
250 MCM		YELLOW	HT41BE	16	U29RT	62
	3/0 AWG	RUBY	HT41GW	467	U27ART	60
300 MCM		WHITE	HT41BF	17	U30RT	66
	4/0 AWG	WHITE	HT41EZ	298	U28ART	66
350 MCM		RED	HT41BJ	18	U31RT	71H
	250 MCM	RED	HT41FW	324	U29ART	71H
400 MCM		BLUE	HT41BK	19	U32RT	76
	300 MCM	BLUE	HT41GZ	470	U30ART	76
500 MCM		BROWN	HT41BL	20	U34RT	87H
	350 MCM	BROWN	HT41FA	299	U3RT	87H
600 MCM	400 MCM	GREEN	HT41HH/HT41BM	472/22	U32ART/U36RT	94H
	500 MCM	PINK	HT41FB	300	U34ART	99H
750 MCM		BLACK	HT41BP	24	U39RT	106H
	600 MCM	BLACK	HT41HG	473	U36ART	106H
	700/750 MCM	YELLOW	HT41LJ	936	U39ART-2	115H



# Wire Rope Dies

## 12 Ton "U" Type Compression Dies



### Features

- Designed for Duplex Oval Sleeves and Button Stops
- For use on Copper and Aluminum Only
- Fits in Any 12 Ton Tool that Uses Standard "U" Dies

ITEM #	DESCRIPTION	ALUMINUM	COPPER
18AC	WIRE ROPE DIE 1/8" AC	1/8"	1/8"
316AC	WIRE ROPE DIE 3/16" AC	3/16"	3/16"
14AC	WIRE ROPE DIE 1/4" AC	1/4"	1/4"
516AC	WIRE ROPE DIE 5/16" AC	5/16"	5/16"
38AC	WIRE ROPE DIE 3/8" AC	3/8"	3/8"
716A12C	WIRE ROPE DIE 7/16" A, 1/2" C	7/16"	1/2"
716C	WIRE ROPE DIE 7/16" C		7/16"
12A	WIRE ROPE DIE 1/2" A	1/2"	

## HTK-CASE, DIE-CASE & W-CASE

### Die Cases



HTK-CASE

DIE-CASE

W-CASE

### Features of HTK-CASE

- Shock Absorbing Cushion of Air Between Double Walls
- Holds Up To 10 Die Sets

### Features of DIE-CASE

- Holds 18 "U" Type Die Sets or 8 "P" Type Die Sets
- Constructed of Heavyweight Plastic

### Features of W-CASE

- Holds 12 "W" Type Die Sets
- Constructed of Heavyweight Plastic

The **HTK CASE** offers a convenient way to store your Huskie dies. The case is a custom molded case made with a shock absorbing cushion of air between sturdy double walls. It has ten individual compartments that will hold up to ten die sets. Will hold: HTK-Series, HT41 Series, HT58-Series and HT-Series dies.

The Huskie model **DIE-CASE** is offered as a stand alone die carrying case and is the same case supplied with the REC-3000 Series kits. It will hold either 18 "U" type die sets or 8 "P" type die sets. It is constructed of heavyweight plastic with a hinged see-through top for easy identification of die sets.

The **W-CASE** will hold 12 "W" dies from our HT58-Series.



# Gauges

## Specifications PG-1

Description	In Line Pressure Gauge Kit
Weight	3 lbs.
Dial Face	2-1/2"
Size	9" x 4.5" x 1.5"

## Specifications PG-4/PG-4K

Description	12 Ton Test Gauge Kit (PG-4) 12 Ton Test Gauge Kit-Kearney (PG-4K)
Weight	3.5 lbs.
Dial Face	4"
Size	9" x 4" x 1.5"

## Specifications PG-15

Description	6 Ton Test Gauge Kit
Weight	5 lbs.
Dial Face	4"
Size	10.5" x 4" x 2"

## Specifications PG-58

Description	6 Ton test Gauge Kit
Weight	1.78 lbs.
Dial Face	4"
Size	7.5" x 4" x 1.75"

## Specifications PG-610A

Description	15 Ton Test Gauge Kit
Weight	3.3 lbs.
Dial Face	4"
Size	10" x 4" x 1.75"

## Specifications PG-ND

Description	Test Gauge Kit
Weight	3.4 lbs.
Dial Face	4"
Size	9.5" x 4" x 1.5"

## Specifications PG-SL

Description	Test Gauge Kit
Weight	3.4 lbs.
Dial Face	4"
Size	9.5" x 4" x 1.5"

PG-1



PG-4



PG-15



PG-58



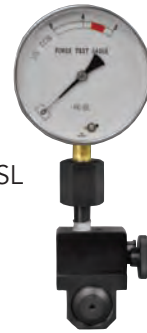
PG-610A



PG-ND



PG-SL



The **PG-1**, in line pressure gauge has standard 3/8" couplers and a 10,000 psi indicator. It is used to test pump output pressure. Male and female couplers allow you to install it between the tool head and the pump.

The **PG-4** gauge is used to calibrate 12 ton output tools. It was designed to fit in all brands of 12 ton tools, and is supplied with U-type test dies. If you are using Kearney tools, specify PG-4K which comes with TDK-1 test dies.

The **PG-15** is designed to check pressure on all Huskie 6 ton hydraulic tools. It is supplied with necessary adapter.

The **PG-58** is designed to check internal pressure on all pistol grip style battery operated tools. It is necessary to check pressure on our dieless tools.

The **PG-610A** gauge is used to calibrate 12 & 15 ton output tools. The gauge is supplied with HT41 test die a "U" die adapter (not supplied) is necessary to test a 15 ton tool.

The **PG-ND** gauge is used to calibrate the ECO-EZ Series tools, as well as the REC-ND tools and the **PG-SL** is for SL-ND tools with pull-pin.

Our PG-4, PG-15, PG-58, & PG-610A gauges come complete with necessary dies, carrying case, and certification.



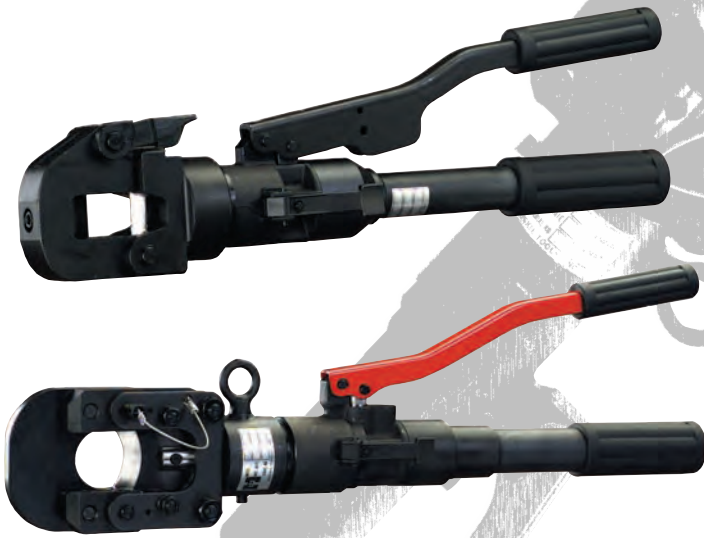




**HYDRAULIC & MANUAL CUTTING TOOLS**



# Hydraulic & Manual Cutting Tools



**S-Series Hydraulic Handheld Cutters**  
P. 75



**Ratchet Cable Cutters**  
P. 73



**Low Pressure Cable Cutter**  
P. 79



**SP-Series Hydraulic Handheld Cutter Heads**  
P. 77



**Cable and Insulation Strippers**  
P. 80



**Hydraulic Scissor Remote Heads**  
P. 78



# RI-500

## Ratchet Cable Cutter



The **RI-500** was designed to cut up to 500 MCM copper cables. The special ergonomic handle design gives you extra leverage at the bottom and is narrowed at the top for easier handling.

The durable handles are made of a high visibility, orange plastic. Its cutting head is black oxide coated to help reduce corrosion.

**NOTE:** DO NOT CUT STEEL.

### Specifications

Weight	1.5 lbs.
Length	10"
Handle Span	5.5"

### Cutting Capacities

1.25" O.D. Al
500 MCM Cu

### Optional Accessories

Z325A-11	Fixed Replacement Blade
Z325A-12	Moveable Replacement Blade

### Features

- Longer Handles for Leverage
- Thumb Lever to Release the Blade
- Carrying Pouch Included

# R-750C

## Ratchet Cable Cutter



The **R-750C** has a ratchet mechanism that has been designed to withstand the stress of 750 MCM copper and aluminum cables with a maximum O.D. of 1-3/4." The blades have a 100% cutting surface which provides the best possible cutting leverage.

A thumb release lever allows the operator to back out of a cut when necessary. A locking mechanism closes the handles for easy storage.

**NOTE:** DO NOT CUT STEEL.

### Specifications

Weight	2 lbs.
Length	9"
Handle Span	6.5"

### Cutting Capacities

1.75" O.D. Al
750 MCM Cu

### Optional Accessories

1819.016	Fixed Blade
1819.013	Moveable Blade

### Features

- Thumb Lever to Release Blade



# S-SERIES

## Handheld Hydraulic Cutters

Huskie's **S-Series** tools cut anything from guy wire\* to anchor rod and most overhead and underground cables. The S-series cutters are portable, lightweight, and made to last years under the toughest field conditions. The S-40B and S-85 feature a two stage pumping piston for rapid advance.

The new S-240CC, S-32CC and SP-24CC hydraulic cutters were specially engineered to cut the toughest EHS guy wire, ground and anchor rods. The SP-24CC is the remote head version, which requires an external 10,000 psi pump in order to operate. The anvil style, center cut blades eliminate jamming problems common to shear style cutters, and the blades are easily replaced in the field. The tools are made of high grade steel and have rubber handle grips. All tools are black zinc oxide coated to help reduce corrosion. A flip-top latch opens the tool jaw to easily accept cables and wires. The head can be rotated up to 180° to facilitate easy wire positioning and operator leverage.

Consult the chart below to pick the proper cutter for your needs. If there are any questions about capacities, or special applications please contact Huskie Tools.

**\*NOTE:** DO NOT CUT EHS GUY WIRE. FOR EHS GUY WIRE SPECIFY S-240CC, S-32CC OR THE REMOTE HEADS SP-24CC OR SP-32CC1.

Specifications									
Model	S-16	S-20	S-240	S-32	S-40B	S-55	S-85	S-240CC	S-32CC
Output	4.4 Ton	4.4 Ton	7.8 Ton	19.8 Ton	6.3 Ton	13 Ton	2.7 Ton	7.8 Ton	19.8 Ton
Weight	6 lbs.	6 lbs.	9 lbs.	21 lbs.	12 lbs.	17 lbs.	15 lbs.	11 lbs.	23 lbs.
Length	15"L	15"L	17"L	27"L	23"L	24"L	26"L	18.5"L	27"L
Jaw Opening	.6"	.75"	.9"	1.25"	1.6"	2"	3.3"	.9"	1.25"
Capacities									
Wire Ropes	16mm	20mm	22mm	32mm	20mm	26mm	Do Not Cut	Do Not Cut	Do Not Cut
	5/8"	3/4"	7/8"	1-1/4"	3/4"	1"			
Soft Steel Bolts	16mm	17mm	22mm	32mm	20mm	32mm	Do Not Cut	16mm	26mm
	5/8"	11/16"	7/8"	1-1/4"	3/4"	1-1/4"		5/8"	1"
Rebar, Ground & Anchor Rod	13mm	13mm	16mm	22mm	16mm	20mm	Do Not Cut	16mm	26mm
	1/2"	1/2"	5/8"	7/8"	5/8"	3/4"		5/8"	1"
Cu & Al Wire	16mm	20mm	22mm	32mm	40mm	50mm	76mm	Do Not Cut	Do Not Cut
	5/8"	3/4"	7/8"	1-1/4"	1-1/2"	2"	3"		
ACSR	16mm	20mm	22mm	32mm	40mm	50mm	Do Not Cut	Do Not Cut	Do Not Cut
	5/8"	3/4"	7/8"	1-1/4"	1-1/2"	2"			
Standard Guy Wire	13mm	14mm	16mm	22mm	16mm	20mm	Do Not Cut	14mm	22mm
	1/2"	1/2"	5/8"	7/8"	5/8"	3/4"		9/16" EHS	7/8" EHS
Telephone & Lead Sheathed Cable	Do Not Cut	Do Not Cut	Do Not Cut	Do Not Cut	Do Not Cut	Do Not Cut	85mm	Do Not Cut	Do Not Cut
							3.35"		
Chain	Do Not Cut	Do Not Cut	Do Not Cut	Do Not Cut	Do Not Cut	Do Not Cut	Do Not Cut	1/4"	1/2"





# S-SERIES

Handheld Hydraulic Cutters



S-16



S-20



S-240



S-240CC



S-32



S-32CC



S-40B



S-55



S-85



# SP-SERIES

## Hydraulic Operated Remote Cutting Heads

The **SP-SERIES** remote head units connect to any 10,000 psi, high pressure, hydraulic pumping system. Choose from seven different models of production cutters, to cut costs and efforts. A 3/8" screw-type male coupler is supplied with each tool. Huskie Tools remote cutters have a hinged head which can be opened for easy cable or bar insertion. The movable blade advances in a shear fashion, to cut the material cleanly. When the cutting pressure is relieved an internal ram spring retracts the blade. The guillotine cutting style was chosen over scissor type cutting because of its powerful output force, larger cable capacities, compact size and reliability.

All tools can be used under water, consult factory for specific applications.

**NOTE:** FOR EHS GUY WIRE SPECIFY S-24CC, S-32CC OR THE REMOTE HEAD SP-24CC.

### Features

- Lightweight and Portable
- Operate from Any 10,000 psi Hydraulic Source
- Works in Any Position

Specifications										
Model	SP-20	SP-24	SP-24CC	SP-32	SP-32CC1	SP-35	SP-40	SP-55	SP-85	SP-100
Output	4.4 Ton	7.8 Ton	7.8 Ton	20 Ton	24 Ton	6.2 Ton	6.28 Ton	13 Ton	2.7 Ton	8.3 Ton
Weight	3 lbs.	6 lbs.	21 lbs.	21 lbs.	26 lbs.	8 lbs.	8.5 lbs.	20 lbs.	16 lbs.	29 lbs.
Length	8"L	11"L	14"L	14"L	13.5"L	14"L	12"L	17"L	19"L	24"L
Jaw Opening	.75"	.9"	.9"	1.25"	1.25"	1.3"	1.6"	2"	3.3"	4"
Capacities										
Wire Ropes	20mm	22mm	Do Not Cut	32mm	Do Not Cut	Do Not Cut	20mm	26mm	Do Not Cut	Do Not Cut
	5/8"	7/8"		1-1/4"			3/4"	1"		
Soft Steel Bolts	14mm	20mm	16mm	32mm	26mm	14mm	16mm	32mm	Do Not Cut	Do Not Cut
	9/16"	3/4"	5/8"	1-1/4"	1"	9/16"	5/8"	1-1/4"		
Rebar, Ground & Anchor Rod	13mm	16mm	16mm	26mm	26mm	13mm	16mm	20mm	Do Not Cut	Do Not Cut
	1/2"	5/8"	5/8"	1"	1"	1/2"	5/8"	3/4"		
Cu & Al Wire	20mm	22mm	Do Not Cut	32mm	Do Not Cut	800 MCM	40mm	50mm	76mm	3-1/2"
	3/4"	7/8"		1-1/4"			1-1/2"	2"	3"	
ACSR	20mm	22mm	Do Not Cut	32mm	Do Not Cut	336 MCM	40mm	50mm	Do Not Cut	Do Not Cut
	3/4"	7/8"		1-1/4"			1-1/2"	2"		
Standard Guy Wire	14mm	16mm	14mm	22mm	22mm	14mm	16mm	20mm	Do Not Cut	Do Not Cut
	1/2"	5/8"	9/16" EHS	7/8"	7/8" EHS	1/2"	5/8"	3/4"		
Chain	Do Not Cut	Do Not Cut	1/4"	Do Not Cut	1/2"	Do Not Cut	Do Not Cut	Do Not Cut	Do Not Cut	Do Not Cut
Comm. Cables	Do Not Cut	Do Not Cut	Do Not Cut	Do Not Cut	Do Not Cut	Do Not Cut	Do Not Cut	Do Not Cut	3.35"	4"
Lead Sheath Cables	Do Not Cut	Do Not Cut	Do Not Cut	Do Not Cut	Do Not Cut	Do Not Cut	Do Not Cut	Do Not Cut	3.35"	4"



# SP-SERIES

Hydraulic Operated Remote Cutting Heads



SP-20



SP-24



SP-24CC



SP-32



SP-32CC1



SP-35



SP-40



SP-55



SP-85



SP-100





# YSP-Series

## Scissor Cutter Remote Heads



YSP-30



YSP-34



YSP-60



YSP-85YC

Specifications				
Model	YSP-30	YSP-34	YSP-60	YSP-85YC
Output	4.4 Ton	4.4 Ton	6.6 Ton	8 Ton
Weight	6 lbs.	6 lbs.	6 lbs.	10.5 lbs.
Length	12"	12"	12"	18"
Capacities				
ACSR	477	Do Not Cut	Do Not Cut	Do Not Cut
Copper	500 MCM*	800 MCM	750 MCM	1000 MCM
Aluminum	1.18" O.D.	1.24" O.D.	1.18" O.D.	3"
Telecommunication	Do Not Cut	Do Not Cut	Do Not Cut	3"
Lead Sheath	Do Not Cut	Do Not Cut	Do Not Cut	2.5"

\* Will not cut ALL 500 MCM copper cable-consult factory.

The **YSP-Series** tools are remote cutting heads to be used with a 10,000 psi pumping source.

**YSP-30** can cut ACSR up to 477 and copper and aluminum cables up to 1.18" O.D. WILL NOT CUT 4/0 Penguin or 3/0 Pigeon ACSR cables.

**YSP-34** is designed to cut 800 MCM hard drawn copper cable. DO NOT CUT STEEL.

**YSP-60** is similar to the YSP-30, except it has a 2" cable capacity and is ideal for aluminum cables up to 2" O.D. and 500MCM Copper. DO NOT CUT STEEL.

**YSP-85YC** is designed to cut various cables, including copper up to 1000 MCM and Aluminum up to 3". DO NOT CUT STEEL.

HTADPT  
Hot Stick Adapter



Phone: 800-860-6170  
Fax: 800-345-3767

HYDRAULIC & MANUAL CUTTING TOOLS

# DA-12

## Hydraulic Low Pressure 4" Cable Cutter



Specifications	
Output	6 Ton at 2,500 psi
Weight	31 lbs.
Size	15" x 15" x 17"

Cutting Capacities	
Lead Sheath	4"
Comm. Cables	4200 pair

Features	
<ul style="list-style-type: none"><li>• Operates on 2500 psi</li><li>• 4" Jaw Opening</li><li>• Safety Trigger</li></ul>	

The **DA-12** hydraulic hand-held, cable cutter can be operated directly from the utility line truck. At 2,500 psi pressure it can cut four-inch lead sheath cables as well as 4200 pair communications cables. A 6 ton cutting force is produced at 2,500 psi pressure, less than 2,500 psi will reduce the cutting capacity. It operates on open center trucks and comes with HTMA couplers.

The four inch jaws slice through lead, copper and aluminum cables cleanly and without jamming because of the double-acting system. The DA-12 is portable, with non-slip, knurled handles and a safety ring. It has a positive open and close position and a special built-in safety trigger. It stops when you stop.



# AS-025 & AS-118

## Cable Stripper for Semi-con and Secondary

### Order Data

AS-118	Adjustable Stripper
AS-025	Fixed .025 Depth Stripper
ASB	Replacement Blade

### Features

- Semi-con Stripper
- .025 Blade Depth Available
- Up to 1" Maximum O.D.



The Huskie **AS-118** cable stripper is used for cables from .180 to 1 inch max. O.D. It has an adjustable blade depth to a maximum of .118" for use on most plastic jacketed cables. Tough insulation can be cut in a spiral direction for easier stripping, while other insulation can simply be cut longitudinally for quicker stripping. The model **AS-025** is the same, except for a fixed blade depth of .025" used for many semi-con jackets.

# NP-400

## Insulation Stripper

### Accessory

400-10	Replacement Blade
--------	-------------------

### Features

- Capable of Midspan Stripping
- Up to 1-1/4" O.D.
- Copper and Aluminum
- Spring Load



The Huskie **NP-400** can strip insulation from a conductor with an O.D. of .35" to 1-1/4" and a maximum insulation thickness of 3mm (.118). This tool will not work on semi-conductor since the cutting blade uses a scoop design to pull insulation away from the wire strands. It is most commonly used on jacketed aluminum and copper cables for both underground and overhead. Our peeler can handle mid-span stripping as well as cable end preparation. A simple rotation and hand force is all it takes to remove the jacket. Either handle can be removed for close quarter operation.

It is necessary to change the blade depth according to the insulation thickness. Send cable samples to Huskie Tools for testing.

**NOTE:** NOT FOR REMOVING SEMICONDUCTOR JACKETS.

## HYDRAULIC & MANUAL CUTTING TOOLS







**HYDRAULIC PUMPS & PUNCHES**



# Hydraulic Pumps & Punches



**Huskie Tools Ambassador**  
**Bruce Oakes, Foreman**  
Company: Pike Electric  
South Carolina

*Bruce holds the R-14EF and SH-70M.*



**Hydraulic Hand and Foot Pumps**  
P. 83



**Hydraulic Steel Punch & Dies**  
P. 87

**Hydraulic Pumps**  
Pgs. 84-86



**Foot Switch**  
P. 88



**Couplers**  
P. 89



**Remote Control Handle**  
P. 88



**Hydraulic Hose**  
P. 89



# HP-700

## 10,000 psi Hydraulic Hand Pump



The **HP-700** is a portable, tough, hydraulic steel pump that has two speed pumping pistons for rapid advance and an external adjustable pressure setting from 4,000 to 10,000 psi output. An internal oil bladder allows the tool to be used in any position.

Our exclusive replaceable, by-pass cartridge is standard in the HP-700. Field repairs and pressure adjustments can be made in minutes. Use our PG-1 gauge for pressure adjustments.

**NOTE:** When using any of these high pressure tools, always use 10,000 psi rated non-conductive hose (NC-16 series).

### Specifications

Weight	20 lbs.
Length	23"
Oil Reservoir	44 cu/in fluid
1st Stage	.75 in <sup>3</sup> per stroke
2nd Stage	.14 in <sup>3</sup> per stroke

### Features

- Two-Stage Pump Piston for Rapid Advance
- External Pressure Adjustment from 4,000-10,000 psi
- Can Be Operated in Any Position
- Knob Type Release Valve

# FP-700

## 10,000 psi Hydraulic Foot Pump



The **FP-700** is a portable, tough, hydraulic steel pump that has two speed pumping pistons for rapid advance and an external adjustable pressure setting from 4,000 to 10,000 psi output. An internal oil bladder allows these tools to be used in any position.

Our exclusive replaceable, by-pass cartridge is standard in the FP-700. Field repairs and pressure adjustments can be made in minutes. Use our PG-1 gauge for pressure adjustments.

**NOTE:** When using any of these high pressure tools, always use 10,000 psi rated non-conductive hose (NC-16 series).

### Specifications

Weight	25 lbs.
Length	28"
Oil Reservoir	44 in <sup>3</sup> fluid
1st Stage	.75 in <sup>3</sup> per stroke
2nd Stage	.14 in <sup>3</sup> per stroke

### Features

- Two-Stage Pump Piston for Rapid Advance
- External Pressure Adjustment from 4,000-10,000 psi
- Can Be Operated in Any Position
- Knob Type Release Valve



# R-14EF

1/2 HP, 10,000 psi Hydraulic Pump

## Specifications

Weight	34 lbs.
Size	7"L x 6"W x 14"H
Power Output	1/2 HP-6.5 Amp
Delivery @ 200 psi	157 in <sup>3</sup> /min
Delivery @ 10,000 psi	19 in <sup>3</sup> /min
Oil Capacity	120 in <sup>3</sup> (2 quarts)

## Optional Accessories

REC-P1CASE	Steel Carrying Case, p. 94
URH-14	Remote Control Handle, p. 88
FS-14	Foot Switch, p. 88

## Features

- Remote Operation Allows Full Operator Control
- Advance and Hold Feature Standard
- Manual Control Directly on Pump Motor
- Pressure Adjustment from 4,000-10,000 psi



The **R-14EF** remote operated pump gives the operator complete control. Push buttons permit the user to advance and retract at will. The user is never committed to a full cycle, and can always back off at any time during the advance even under pressure. This feature increases efficiency because cuts and crimps can be adjusted as necessary, simply by stopping the advance or retract mode. A 10-foot remote control cable provides both safety and convenience. The user can set up an operation and then move away from the work site before engaging the tool. An over-ride switch on the pump allows full control at the pump motor. The low amperage of this pump allows it to be used virtually anywhere. The pressure can be easily adjusted between 4,000 and 10,000 psi and determined by using our PG-1 in-line gauge. Consult factory for proper adjusting procedure.

**NOTE:** When using any of these high pressure tools, always use 10,000 psi rated non-conductive hose (NC-16 series).

# R-14EA

3/4 HP, 10,000 psi Single Acting Hydraulic Pump

## Specifications

Weight	75 lbs. with Oil
Size	14"L x 13.25"W x 16"H
Power Output	3/4 HP - 8.2 Amp
Delivery @ 300 psi	157 in <sup>3</sup> /min
Delivery @10,000 psi	36 in <sup>3</sup> /min
Oil Capacity	182 cu/in (3 quarts)

## Optional Accessories

URH-14	Remote Control Handle, p. 88
FS-14	Foot Switch, p. 88

## Features

- Remote Operation Allows Full Operator Control
- Manual and Automatic Mode for Additional Versatility
- 3/4 HP Rating
- Low Amperage Requirement



The **R-14EA** is a fully remote controlled, single acting, 10,000 psi, electric pump. The two button hand control allows the user to advance, hold, or release at any time. When 10,000 psi is reached, the pump will automatically shut off and hold until the operator pushes the release button to retract the tool. There is an auto cycle switch that allows the operator to push the advance button and the pump will automatically advance, run to 10,000 psi and release. This feature is mostly used for production crimping and cutting where the operator must have the freedom of both hands. A remote foot control pedal is optional.

**NOTE:** When using any of these high pressure tools, always use 10,000 psi rated non-conductive hose (NC-16 series).





# R-14EAD

3/4 HP, 10,000 psi Double Acting Hydraulic Pump



The **R-14EAD** is a fully remote controlled, double acting, 10,000 psi, electric pump. The hand control allows the user to advance or release at any time. There is an auto cycle switch that allows the operator to push the advance button and the pump will automatically advance, run to 10,000 psi and release. This feature is used mostly for production crimping and cutting, where the operator must have the freedom of both hands. A remote foot control pedal is optional.

**NOTE:** When using any of these high pressure tools, always use 10,000 psi rated non-conductive hose (NC-16 series).

## Specifications

Weight	75 lbs. with Oil
Size	14"L x 13.25"W x 16"H
Power Output	3/4 HP - 8.2 Amp
Delivery @ 300 psi	157 in <sup>3</sup> /min
Delivery @10,000 psi	36 in <sup>3</sup> /min
Oil Capacity	182 cu/in (3 quarts)

## Optional Accessories

FS-14	Foot Switch, p. 88
-------	--------------------

## Features

- Remote Operation Allows Full Operator Control
- Manual and Automatic Mode for Additional Versatility
- Low Amperage Requirement

# HPG-4

4 HP, Gas Engine 10,000 psi Hydraulic Pump



The **HPG-4** is a self-contained high pressure pump, with manual operation. It is equipped with a 4 HP Briggs & Stratton engine. A four-way valve controls the hydraulic fluid direction for the advance and retract modes. One double acting tool can be operated or two single acting tools at one time. Connection to one port for single acting tools will work since the control valve will dump the fluid when shifted to the retract position. The pump is very compact and comes with carrying handles.

**NOTE:** When using any of these high pressure tools, always use 10,000 psi rated non-conductive hose (NC-16 series).

## Specifications

Weight	74 lbs. with Oil
Oil Capacity	5 Gallons
Gas Tank	3 Pints
Max Pressure	10,000 psi
Power Output	4 HP
Oil Delivery @ 100 psi	480 in <sup>3</sup> /min
Oil Delivery @ 10,000 psi	55 in <sup>3</sup> /min

## Features

- Four Way Valve Allows for Single or Double Acting Capacity
- Standard Screw Type Male and Female Couplers



RC-5  
Optional Roll/  
Carry Cage

## HYDRAULIC PUMPS & PUNCHES



# REC-P1 ROBO\*PUMP

10,000 psi Battery Powered 28.8 Volt Pump

## Specifications

Output	10,000 psi
Weight	23 lbs. with 2 Batteries
Size	16"L x 6"H x 10"D

## Crimping Estimates

	2 BP-80
Using a 10 ft. Hose and EP-60W on 1272 ACSR	12
No Load Cycle Time	Advance 25 Sec., Retract 30 Sec.

## Optional Accessories

FS-14	Foot Switch, p. 88
URH-14	Remote Handle, p. 88
REC-P1CASE	Steel Carrying Case, p. 94

## Features

- Powerful 28.8 Volt
- Operate Up to Single Acting 60 Ton Press
- Adjustable 10,000 psi
- Eliminates the Need for AC Power
- Compact and Portable



The Huskie **REC-P1** is a 28.8 volt, battery operated hydraulic pump that runs on two 14.4 Volt Huskie BP-80 series batteries. The REC-P1 is supplied with a push button remote control that allows the operator to advance, hold, and retract when needed. The user is never committed to a full cycle and can always back off at any time during the advance— even when the pump is under pressure. High pressure, non-conductive hose can be attached to a 360° moveable swivel port on the pump. This swivel port allows the user to position the hose to fit in confined aerial buckets and manholes.

Both batteries must be inserted in the pump to operate. It is recommended to operate the pump with a 10 foot hose, up to a maximum of 20 feet. A longer hose will cause cycle times to increase.

We recommend you specify the Huskie SC-Series flush face dripless couplers, as not to deplete the oil in the reservoir when changing heads.

For additional ordering information, please refer to page 10.



# SH-70M

## 35 Ton Hydraulic Steel Punch



The portable **SH-70M** punch was designed to punch holes through 1/2" mild steel, aluminum and copper. The punched hole size is 1/16" larger than your bolt size. A stripper guide extends on either side of the ram to strip the material after punching. This hand-held unit will operate from any 10,000 psi hydraulic pumping source.

Some uses include the punching of bus bars, tower iron, railing, I-beams and truck frames. Custom size punch and dies are available upon request. Oval and square sizes are also available. Consult factory for order information. The SH-70M and SH-70F comes complete with four sets of punch and die sizes for 3/8", 1/2", 5/8" and 3/4" bolts and carrying case.

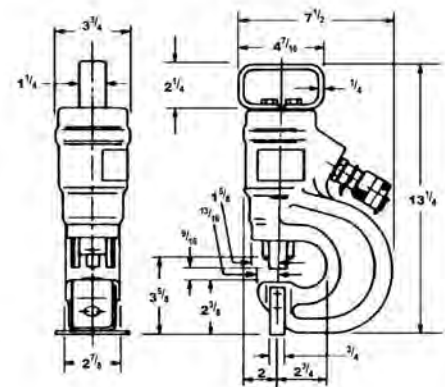
**NOTE:** USE ONLY 10,000 psi RATED HOSE.

Specifications	
Output	35 Ton
Weight	28 lbs.
Capacity	1/2" Thick Mild Steel
Max. Hole	13/16" Diameter
Dimensions	14" x 8" x 3.5"
Throat Depth	2.75"

Order Data	
SH-70M	Steel Punch with Male Coupler
SH-70F	Steel Punch with Female Coupler

Features	
<ul style="list-style-type: none"> <li>• Punches UP TO 1/2" Mild Steel</li> <li>• 13/16" Max Hold Diameter</li> <li>• Will Punch: Oval, Round, Square, and Slotted Holes</li> <li>• Custom Sizes Available</li> <li>• Operates from a 10,000 psi Pump Source</li> </ul>	

Round Dies		
ITEM	DESCRIPTION	BOLT SIZE
SHD-18	1/8" Punch & Die Set	
SHD-316	3/16" Punch & Die Set	
SHD-14	1/4" Punch & Die Set	
SHD-932	9/32" Punch & Die Set	
SHD-516	5/16" Punch & Die Set	
SHD-38	3/8" Punch & Die Set	
SHD-716	7/16" Punch & Die Set 10.5	3/8"
SHD-12	1/2" Punch & Die Set	
SHD-916	9/16" Punch & Die Set 13.5	1/2"
SHD-58	5/8" Punch & Die Set	
SHD-1116	11/16" Punch & Die Set 17.5"	5/8"
SHD-34	3/4" Punch & Die Set	
SHD-1316	13/16" Punch & Die Set 20.5	3/4"



Oblong Dies		
ITEM	DESCRIPTION	BOLT SIZE
SHD-516X1316	5/16" X 13/16" Oblong Punch & Die Set	
SHD-38X1316	3/8" X 13/16" Oblong Punch & Die Set	
SHD-716X1316	7/16" X 13/16" Oblong Punch & Die Set	3/8"
SHD-12X38	1/2" X 3/8" Oblong Punch & Die Set	
SHD-12X34	1/2" X 3/4" Oblong Punch & Die Set	
SHD-12X1316	1/2" X 13/16" Oblong Punch & Die Set	
SHD-916X34	9/16" X 3/4" Oblong Punch & Die Set	1/2"
SHD-916X1316	9/16" X 13/16" Oblong Punch & Die Set	1/2"
SHD-58X1316	5/8" X 13/16" Oblong Punch & Die Set	
SHD-1116X1316	11/16" X 13/16" Oblong Punch & Die Set	5/8"
SHD-34X1316	3/4" X 13/16" Oblong Punch & Die Set	

Square Dies	
ITEM	DESCRIPTION
SHD-14SQ	1/4" Square Punch & Die Set
SHD-38SQ	3/8" Square Punch & Die Set
SHD-716SQ	7/16" Square Punch & Die Set
SHD-12SQ	1/2" Square Punch & Die Set
SHD-1732SQ	17/32" Square Punch & Die Set
SHD-916SQ	9/16" Square Punch & Die Set

Hex Dies	
ITEM	DESCRIPTION
SHD-716HEX	7/16" Hex Punch & Die Set
SHD-916HEX	9/16" Hex Punch & Die Set
SHD-1116HEX	11/16" Hex Punch & Die Set
SHD-1316HEX	13/16" Hex Punch & Die Set





# URH-14

## Remote Control Handle

### Specifications

Weight	3 lbs.
Size	8" L x 1.5" W x 6.5" H

### Order Data

URH-14	Remote Control Handle
REC-URH	Remote Control Handle for REC-P1

### Features

- For Use with All Electrical and Battery Operated Single Acting Pumps
- Allows Operator One Hand Control at the Tool Head
- 10 Foot Cord



The **URH-14** remote control handle is for use with the R-14EF, R-14EA and REC-P1 pumps. It is equipped with a standard 3/8" high pressure coupler that can be easily matched to your existing tool head. A 10 foot, three wire control cable can be hooked directly to the R-14EF or hard wired to any pump that has similar remote control features. The URH-14 weighs only three pounds and is made of tough, durable, molded plastic with a double insulated on/off switch.

# FS-14

## Foot Switch

### Specifications

Weight	4.2 lbs.
Size	9.5" L x 7" W x 3" H

### Optional Accessories

URH-14	Remote Control Handle
FS-14	Foot Switch

### Features

- For Use with All Electrical and Battery Operated Single Acting Pumps
- Allows Operator "Hands Free" Control of Advance and Retract Pump Mode
- 10 Foot Cord

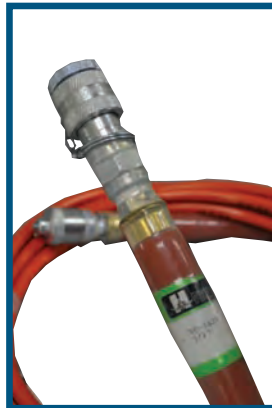


The **FS-14** was designed to replace our pendant hand control on pump models R-14EF, R-14EA, R-14EAD and REC-P1. This foot control allows the operator to free his hands for better control of his work load. It has a green pedal for the advance mode and a red pedal for the retract mode. The FS-14 is mostly used in work bench applications.



# NC-SERIES

10,000 psi High Pressure Hydraulic Hose



Our high pressure, non-conductive **NC-SERIES** hoses and couplers are rated at 10,000 psi working pressure. The hose ends are covered with a thick clear jacket of heavy duty shrink wrap to reduce the risk of hose bursts at these points. They are also date coded during assembly. As a result of injuries sustained by operators of hydraulic products via broken or damaged high pressure hoses Huskie has developed a replacement hose improvement program for our customers. Consult your representative for information. Our hoses come standard with 3/8" male/female couplers.

**NOTE:** FOR OPERATOR SAFETY WE RECOMMEND HOSE REPLACEMENT AFTER 3 YEARS.

## Order Data

NC-1606	3/16" x 6'
NC-1610	3/16" x 10'
RB-1610	3/16" x 10' (Rubber Bound)
NC-1615	3/16" x 15'
NC-1620	3/16" x 20'
NC-1625	3/16" x 25'
NC-450	1/3" x 50' (1/4" NPT Standard Ends)

3/8" NPT hose ends standard. 1/4" NPT also available. Any combination of high pressure couplers are available. Simply specify the kind you require when ordering.

## Features

- Highly Visible Safety Orange (RB-1610 is Brown)
- Heavy Duty Shrink Wrap at Hose Ends for Reduced Risk of Leaking
- Date Coded at Point of Assembly

# SC-SERIES

10,000 psi High Pressure Flush Face Couplers

SCF-8F



SCF-8



SCM-8



FC-8F



SCM-8



## Specifications

Hose End	3/8" NPT
Threaded End	3/8" NPT
Working Pressure	10,000 psi
<b>Minimum Burst Pressure</b>	
Coupled	34,800 psi
Uncoupled	29,000 psi
Hand Connection	250 psi at 150 lbs.
Fluid Loss Per Disconnection	.035 ml

## Order Data

SCF-8F	Female Half with Female Port
SCF-8	Female Half with Male End
SCM-8	Male Half with Female Port
FC-8F	Female Half with Female Port
FC-8	Female Half with Male Port
DC-SCF	Female Cap

## Features

- 10,000 psi Operating Pressure Marked on Both Halves
- Simple Quick Connect and Disconnect
- Twist Sleeve Lock to Prevent Accidental Disconnect
- Flush Face, NON-DRIP Valving, Both Halves

The **SC-SERIES** are flush face, snap-type couplers for use in high pressure applications. They are not interchangeable with low pressure flush face couplers. Positive connect or disconnect prevents tool failure due to partial coupled halves of conventional screw-type couplers.

HYDRAULIC PUMPS & PUNCHES



# Hydraulic Oil

## Order Data

HF-5G	5 Gallon Container
HF-1G	Gallon Container
HF-1Q	Quart Container
HF-5GRED	Red Hydraulic Fluid for Low Temperatures
HF-1GRED	Red Hydraulic Fluid 1 Gallon
HG-1QRED	Red Hydraulic Fluid Quart



Huskie Tools offers replacement **Hydraulic Oil** in three sizes for any service needs. It is our own MV-32 clear hydraulic fluid and can be used in all of our hydraulic products. This fluid can also be added to other clear hydraulic fluids for filling or topping off a hydraulic circuit. Do not mix with other red or blue colored hydraulic fluids as this will "gel" and cause the tool or pump to malfunction. A complete MSDS is available from Huskie Tools upon request.







**ADDITIONAL TOOLING & ACCESSORIES**



# ECO-L90

## LED Light

### Specifications

Length	17.5"
Weight	2.15 lbs. with Battery



The **ECO-L90** has 90 LED lights to brighten up any work area. The lightweight design and top hook allows the light to be hung overhead.

# EZ-HLSTR/SL-HLSTR

## Huskie Tools Holster

### Specifications

Size	23.5"H x 7"W
------	--------------

### Features

- Two Grommets Allow the Holster to Hang in a Bucket
- Very Durable
- Velcro® Sides for Quick Tool Access
- Side Pocket and Carabiner for Extras



Order your own Huskie Holster, the **EZ-HLSTR/SL-HLSTR**, to carry your ECO-EZ, SL tool or any manual hydraulic tool! The Huskie Tools Holster keeps your inline tool close to your side, and Velcro® allows you to quickly grab the tool from the pouch. Two large grommets make it easy to hang the holster inside a bucket. There's a pocket and a key ring on the front for the extras you need while on the job. Each holster also comes with a carabiner. The holster is manufactured by Buckingham.



# 25CAT

Optional Cutter Head Attachment for REC-558U



## Specifications

Capacity 500 MCM Cu\*

Jaw Opening 1"

\* Will not cut ALL 500 MCM copper cable-consult factory.



REC-558U  
See page 21

## UDK-1 and PU-15 "U" Die Adapters



UDK-1



PU-15

The **UDK-1** is a "U" die adapter for Kearney-style, 12 ton tools (REC-5510K and REC-3510K) and the **PU-15** is a "U" die adapter for our 15 ton compression tools.





# ECO-EZHBAG

## Specifications

Size 24" L X 11.5" W



Carry tools and accessories with the **ECO-EZHBAG**. The bag is made of weather resistant vinyl and has two Velcro® closures. Large pockets on the outside hold extra accessories. The bag measures 24" in height and 11.5" wide.

# REC-P1CASE

Steel Carrying Case

The **REC-P1CASE** stores and carries Huskie Tools Pumps and accessories like extra batteries and crimping heads. Also fits the R-14EF.



# Cutting Tool Selection Guide



The marketplace has a variety of cable and rod cutters yet there is not a single cutter capable of cutting “everything”. There are many variables to consider when choosing a cutter, such as, the cable material (copper, aluminum or steel) and the cable type (solid strand, multiple strand, steel core, hardened or soft). Other factors include the type of cut needed (clean or non-distorted as opposed to a jagged cut) and the rod and cable size which should not exceed the cutting capacity.

Cutters should be selected with all of the above factors in mind. As a rule, a few different types of cutters are needed to perform a variety of cutting jobs. Suggested considerations when choosing a cutter include:

1. What is the most frequently cut cable or rod size, type, and what kind of cut is needed?
2. How much time can be saved by using this tool compared to your usual way of cutting?
3. What kind of power source do you need: portable, electric, or gasoline?
4. How often will you be using this tool per day?
5. What are the ergonomic and safety benefits for the user?
6. Consider the quality of the products; are parts and repair services available?
7. What is the reputation of the company you are purchasing from?
8. Cost is the last consideration since your chosen cutter will pay for itself over the next few jobs.

# Compression Tool Selection Guide



When choosing a compression tool, the output tonnage, the jaw opening, and type of tool (electric, battery driven, or mechanical) are the major considerations. Your tool choice should be based on the following guidelines:

1. What is the size of the most commonly compressed cable or sleeve. The cable should be able to fit between the jaws for easy removal after crimping.
2. Consider the physical tool size, ease of handling and operation.
3. What is the frequency of operation? Is this just part of the job or is this a production job requiring constant running of the tool?
4. Is the tool ergonomically designed to protect the operator from all hazards?
5. Choose to buy from a company which stands behind its products. This will usually ensure that parts, service, and dealers are readily available to service your needs.
6. Pricing is your last consideration since the proper tool will pay for itself over the next few jobs and be working for you over the next several years.



# ACSR Cutting Guide

## Use Huskie REC-54M For These Cable Sizes

ACSR Code	Cir. Mills or A.W.G.	ACSR Code	Cir. Mills or A.W.G.	ACSR Code	Cir. Mills or A.W.G.	ACSR Code	Cir. Mills or A.W.G.
Turkey	6	Owl	266	Lark	397	Peacock	605
through		Partridge	266	Pelican	477	Squab	605
Robin	1	Ostrich	300	Flicker	477	Teal	605
Raven	1/0	Merlin	336	Hawk	477	Rook	636
Quail	2/0	Linnet	336	Hen	477	Grosbeak	636
Pigeon	3/0	Oriole	336	Parakeet	556	Egret	636
Penguin	4/0	Chickadee	397	Dove	556	DO NOT CUT Guy Wire, Ground Rod or Bolts	
Waxwing	266	Ibis	397	Eagle	556		

See page 40 for additional specifications.



## Use Huskie REC-S540 For These Cable Sizes

ACSR Code	Cir. Mills or A.W.G.	ACSR Code	Cir. Mills or A.W.G.	Material	Size
Flamingo	666	*Drake	795	Standard Guy Wires	5/8"
Crow	715	Condor	795	Bolt	5/8"
Starling	715	Mallard	795	Ground Rod	3/4"
Redwing	715				

\*Use Huskie S-55 or SP-55 to cut Drake Cable!



## Use Huskie S-55, SP-55 or REC-S3550 For These Cable Sizes

ACSR Code	Cir. Mills or A.W.G.	ACSR Code	Cir. Mills or A.W.G.	Material	Size
Crane	874	Finch	1113	Standard Guy Wires	3/4"
Canary	900	Pheasant	1272	Bolt	7/8"
Cardinal	954	Plover	1431	Ground Rod	3/4"
Curlew	1033	Falcon	1590		



If you have any questions about capacities or special applications, please contact Huskie Tools at 1-800-860-6170.





360° of Sales, Service & After Market Programs  
**Repair. Recycle. Reuse.**



[www.huskietools.com](http://www.huskietools.com)

**ANY TOOL  
ANY CONDITION  
ANY SIZE  
ANYTIME**



# An Overview



Sales, Service & After Market

## Program HIGHLIGHTS

What does it mean to you  
and your company?

**EXPERIENCE ADDS LIFE** to your investment. With over 75 years of combined experience in precision hydraulic compression and cutting tools for the utilities industry it is the Huskie Tools standard of performance that stand out among its competition.

### HIGHLIGHT 3

IT is about **RECONDITIONING**, not repair. Repairing implies that your tool would be fixed for a single damaged or defective part. The Huskie Tools team reconditions your investment so that it looks and acts like a new tool. Each tool is disassembled, inspected, cleaned, refitted with new components and reassembled for a final inspection and test, before being returned to you ready to use once again.

### HIGHLIGHT 1

### HIGHLIGHT 2

**SAFETY FIRST.** This is the primary criteria that must be met before returning your investment. Each tool is tested and certified to meet or exceed the safety standards put forth by the industry. This is only achieved by a comprehensive inspection and testing process that Huskie Tools has incorporated as a added-value offering of the 360° program.

### HIGHLIGHT 4

**A BETTER ROI** for your budgeted dollar is a fact when utilizing the Huskie Tools 360° Program. In an age when budgets are in need of out-of-the-box thinking and options, the 360° program delivers on the mark. Each reconditioned tool is returned to its factory fresh standard of a new tool, without the new tool price.



Phone: 800-860-6170  
Fax: 800-345-3767

**360° OF SALES, SERVICE AND AFTER MARKET PROGRAMS**

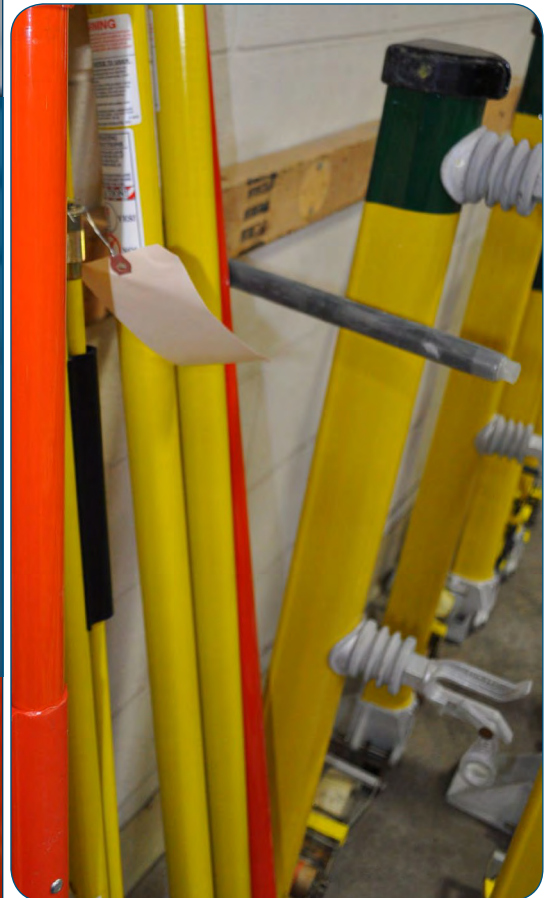


## Fiberglass RECONDITIONING includes:

Cleaning & Inspection

Testing for product integrity  
Dry testing & Wet testing

Parts are sanded, prepped, refinished and stamped with your company identification





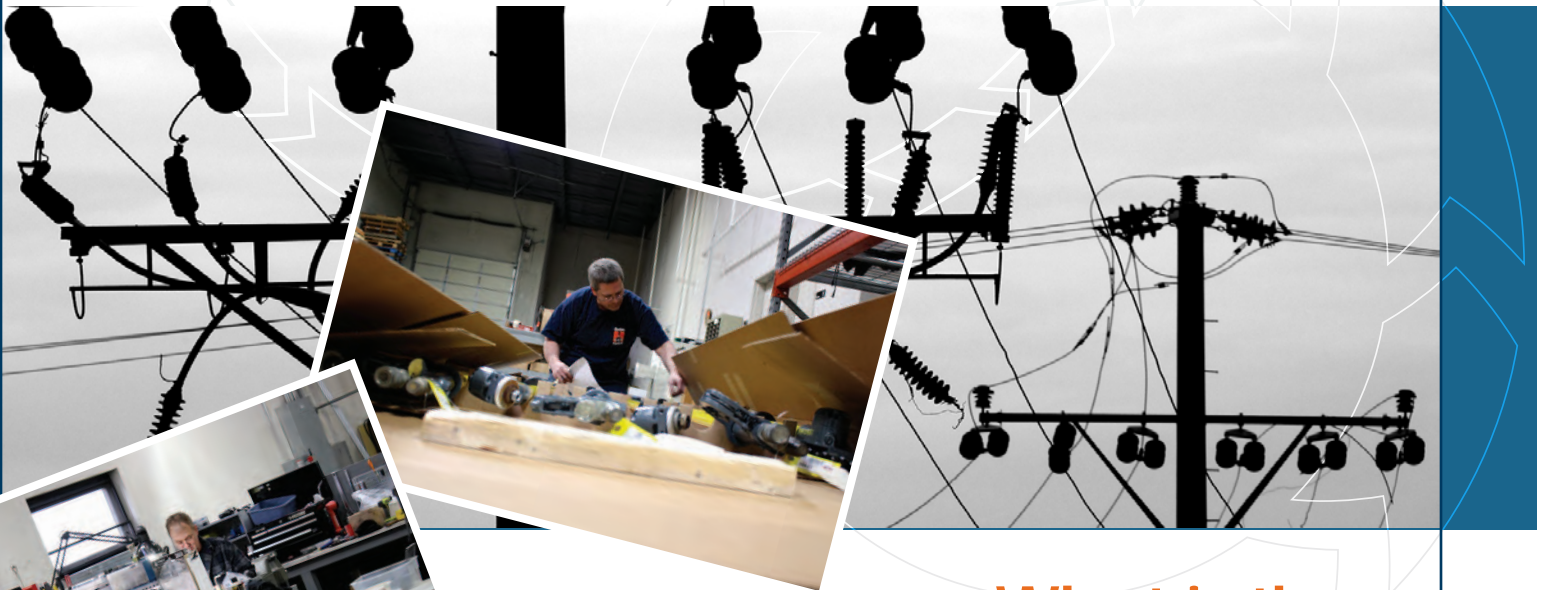
# What is 360°?

## Recycle, Reconditioning, Renewed

### YOU BROKE IT, WE'LL FIX IT. WHATEVER IT IS.

Any tool from Huskie Tools' 35-year history is accepted for repair. But we fix ALL tools, whether Huskie Tools made them or not, and we treat every tool as if it came out of our own toolbox. With over 75 years of combined experience, and technicians certified to repair many

other manufacturers' tools, we have the expertise that can only come from decades of hands-on experience. There's no problem we haven't seen before.



## What is the 360° difference?

**One-on-one** interaction

**Quick Turnaround** on all orders

**One-stop-shop** housed under one roof

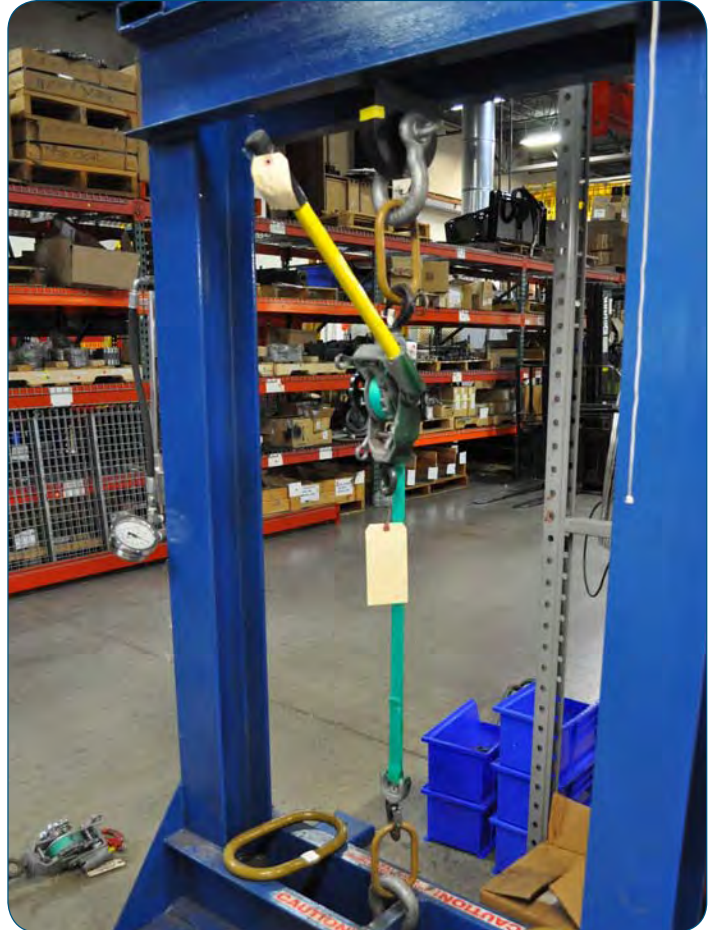
**Over 75 years** of expertise in the industry

**Certified-testing** facility for most brands

198 N. Brandon Dr. Glendale Heights, IL 60139-2025 Phone: 800-860-6170 Fax: 800-345-3767 E-mail: [info@huskietools.com](mailto:info@huskietools.com)







198 N. Brandon Dr. Glendale Heights, IL 60139-2025 Phone: 800-860-6170 Fax: 800-345-3767 E-mail: [info@huskietools.com](mailto:info@huskietools.com)





# The 360° Process

## Reconditioning, not repairing

### NOT JUST A REPAIR HOUSE

Tough industries are tough on their tools, and component failure is only one aspect of tool demise. The abuse your tool goes through can take a toll on its functional integrity. That's why we proactively maintain your tools with a complete end-to-end overhaul. Every tool is cleaned, inspected, tested, sanded, repaired, prepped, refinished, stamped, and reassembled with reconditioned parts. (But if you want to just call it "fixed", we don't mind.)

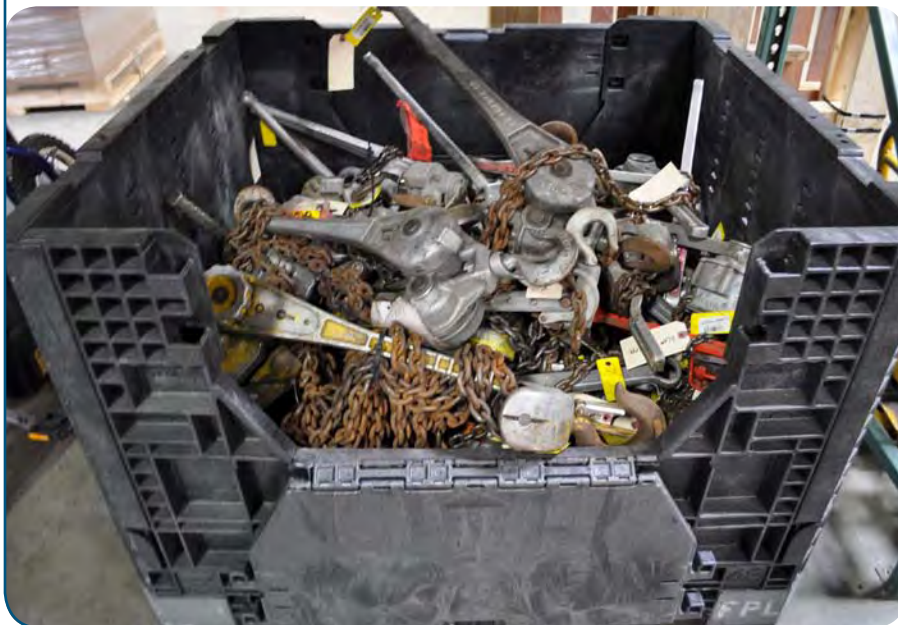


Making sure that your reconditioned investment will exceed your expectation is a top priority in the 360° program. This service criteria is why Huskie Tools performs a variety of testing that includes: Dry and wet testing for fiberglass integrity, cutting and compression testing for hydraulic precision tools, battery life performance, and a host of other measures to certify the performance of your refurbished tools. The Huskie Tools staff is certified in most of its competitor's performance standards, and they have invested in the most up-to-date and industry-approved equipment to confirm that the performance of your tool will be ready for immediate field use once it arrives back in the hands of your linemen.

198 N. Brandon Dr. Glendale Heights, IL 60139-2025 Phone: 800-860-6170 Fax: 800-345-3767 E-mail: [info@huskietools.com](mailto:info@huskietools.com)









# 360° Equals Savings

## Reconditioned like new

### WHY YOU SHOULD BE USING THE 360° SERVICE:

Whether Huskie Tools made it or not, if you send it to us, the product you get back has been completely reconditioned and restored. Every tool is tested and calibrated with certified gauges to original specs, and then returned to you looking and performing like new. A Huskie Tools refurbishment is often accomplished for less than half the cost of a new tool, stretching the value of your initial investment.

And you won't be out of commission for long while your tool is being refurbished. Average turnaround time to fully analyze the problem and establish a plan of action and cost is 7-10 working days. No repair is completed until the estimate is approved by you. We offer full disclosure of the status of your tool and the full cost to fix it versus purchasing a new tool.



What is the ROI  
EXTENDING  
A TOOL'S LIFE

## How Does It translate?

### Budget-savings

This strategy blends refurbished tools into current projects thus helping you get within your budget and improves your economics

### Green procurements

Reusing equipment to fulfill corporate green initiatives reduces the impact on the environment

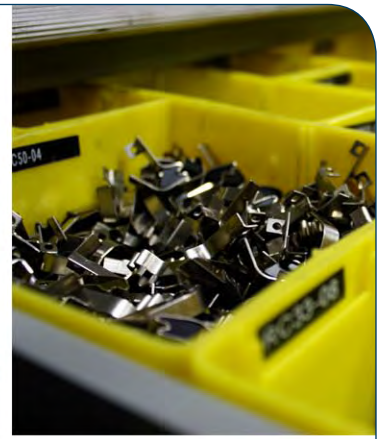
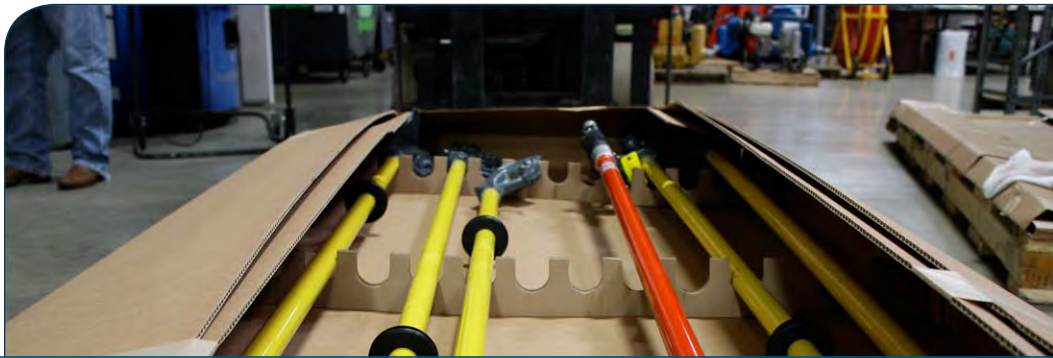
### Maximizing value

Proactively create a reconditioning equipment strategy that communicates a measurable difference for your various departments

198 N. Brandon Dr. Glendale Heights, IL 60139-2025 Phone: 800-860-6170 Fax: 800-345-3767 E-mail: [info@huskietools.com](mailto:info@huskietools.com)

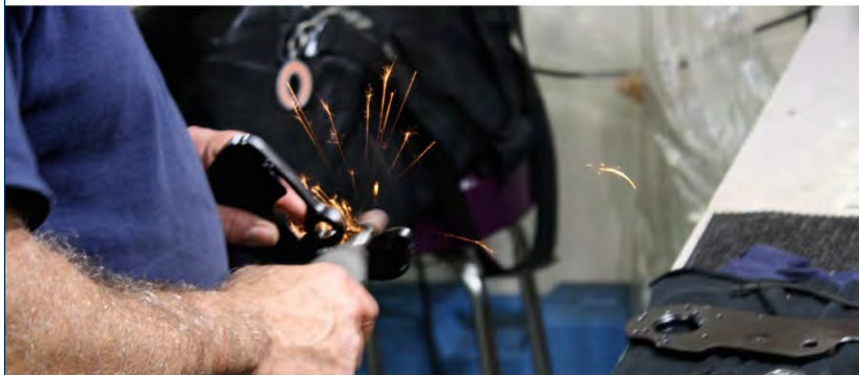






# Recycle, Re-use

Huskie Tools participates in a recycling program for nickel-cadmium and nickel-metal hydride batteries. When you send us these types of batteries, rest assured that they won't go into a landfill. Likewise, any metals from scrap tools or plastics are recycled on a monthly basis.



In 2010, we refurbished over 4100 pieces of Huskie Tools product that might have otherwise met an early end at the dump. Huskie Tools is committed to extending both the life of your tools and the health of our planet.





# Reassurance that your tools are top-notch

All refurbished Huskie Tools products are returned to you with an additional one-year warranty, regardless of the age of the tool. Non-Huskie Tools products are given a 90-day warranty. We're confident you won't need it, but in an imperfect world isn't it nice to know it's there?

Don't take chances with your tools or your team. Be assured of optimal performance with a Huskie Tools end-to-end refurbishment.

Refurbishing is revitalizing. Reconditioning ensures the integrity of your tools and the safety of your team.

**Repair. Refurbish. Restore. Reinforce. Revitalize. Renew. Recycle. Re-Use.**

## SAFETY FIRST

### Protect your lineman & your bottom line

Not all repairs or reconditioning is equal with regards to the returned refurbished tool. Huskie Tools' craftsmen pride themselves on producing a quality product, the same is applied to your reconditioned tools. It doesn't matter the make, model or condition of the tool, the Huskie Tools standard of quality is embedded into everything they touch. This dedication to service and quality allows you to be confident in putting your investment back in the hands of your linemen, where it is needed most.



198 N. Brandon Dr. Glendale Heights, IL 60139-2025 Phone: 800-860-6170 Fax: 800-345-3767 E-mail: [info@huskietools.com](mailto:info@huskietools.com)



# Huskie Tools Representative Directory

## UNITED STATES

### ALABAMA

Tice & Associates, Inc.  
P.O. Box 1168  
Trussville, AL 35173  
Phone: 205-413-8920  
Fax: 205-413-8921  
terri@tice-associates.com  
www.tice-associates.com

### ALASKA

Carlson Sales, Inc.  
9808 NE 126th Ave., Bld. C  
Vancouver, WA 98682  
Phone: 360-573-8203  
Fax: 360-573-8289  
www.carlson-sales.com

### ARIZONA

Clark Power Products, Inc.  
16411 N. 90th St., Suite 108  
Scottsdale, AZ 85260  
Phone: 480-661-8599  
Fax: 480-614-0125  
sales@clarkpowerproducts.com

### ARKANSAS

Aertker Company  
2412 Marietta Street  
Kenner, LA 70063  
Phone: 504-469-0136  
Fax: 504-910-0070  
sales@aertkerco.com  
www.aertkerco.com

### CALIFORNIA - NORTHERN

Isberg Nott Company  
4725 First St. Suite 265  
Pleasanton, CA 94566  
Phone: (925) 426-4718  
Fax: (925) 426-0323  
isberg-nott@isberg-nott.com

### CALIFORNIA - SOUTHERN

McAvoy & Markham, Inc.  
16 Technology Dr., Suite 113  
Irvine, CA 92618  
Phone: (949) 727-3966  
Fax: (949) 727-3910  
sales@mcavoy-markham.com  
www.mcavoy-markham.com

### COLORADO

Mountain States Utility Sales  
721 Gateway Avenue  
Fort Morgan, CO 80701  
Phone/Fax: (970) 867-3731  
sam@msutilitiesales.com

### CONNECTICUT

UCI Sales Group, LLC.  
22 Whiteside St.  
Newington, CT 06111  
Phone: (860) 667-4766  
Fax: (860) 667-4766  
sales@ucisales.com

### DELAWARE

Strategic Partners of PA, Inc.  
100 Fairview Dr.  
West Chester, PA 19382  
Phone: 610-459-2117  
Fax: 610-459-459-9140  
pwasr@comcast.net

### FLORIDA - EXCEPT PAN HANDLE

LJ Smith Company, LLC  
13740 Sheffield Street  
Wellington, FL 33414  
Phone: 561-386-3414  
Fax: 561-798-7460  
ljsmith2008@bellsouth.net

### FLORIDA - PAN HANDLE

Tice & Associates, Inc.  
P.O. Box 1168  
Trussville, AL 35173  
Phone: 205-413-8920  
Fax: 205-413-8921  
terri@tice-associates.com  
www.tice-associates.com

### GEORGIA

Tice & Associates, Inc.  
P.O. Box 1168  
Trussville, AL 35173  
Phone: 205-413-8920  
Fax: 205-413-8921  
terri@tice-associates.com  
www.tice-associates.com

### HAWAII

Carlson Sales, Inc.  
9808 NE 126th Ave., Bldg. C  
Vancouver, WA 98682  
Phone: 360-573-8203  
Fax: 360-573-8289  
www.carlson-sales.com

### IDAHO

Carlson Sales, Inc.  
9808 NE 126th Ave., Bldg. C  
Vancouver, WA 98682  
Phone: (360) 573-8203  
Fax: (360) 573-8289  
www.carlson-sales.com

### ILLINOIS

Utility Sales, Inc.  
930 E. Oak St., Suite 1  
Lake In The Hills, IL 60156  
Phone: (800) 253-6248  
Fax: (800) 498-8078  
info@utilitiesales.net  
www.utilitiesales.net

### INDIANA

REPCO  
324 Parkview Dr.  
P.O. Box 367  
New Castle, IN 47362  
Phone: (800)-700-5009  
Fax: (765) 521-2916  
cheryl@roynon.com  
www.roynon.com

### INDIANA - NORTHWEST

Utility Sales, Inc.  
930 E. Oak St., Suite 1  
Lake In The Hills, IL 60156  
Phone: (800) 253-6248  
Fax: (800) 498-8078  
info@utilitiesales.net  
www.utilitiesales.net

### IOWA

Moehn Electrical Sales, Inc.  
6401 N. 90th Street  
Omaha, NE 68134-0817  
Phone: (402) 572-7875  
Fax: (402) 572-7845  
jmoehn@moehnsales.com  
www.moehnsales.com

### KANSAS

Moehn Electrical Sales, Inc.  
6401 N. 90th Street  
Omaha, NE 68134-0817  
Phone: (402) 572-7875  
Fax: (402) 572-7845  
jmoehn@moehnsales.com  
www.moehnsales.com

### KENTUCKY

Saver Sales  
121 Malabu Dr. Suite 9  
Lexington, KY 40503  
Phone: (859) 260-1944  
Fax: (859) 260-1844  
sales@saversales.com  
www.saversales.com

### LOUISIANA

John J. Aertker Company  
2412 Marietta Street  
Kenner, LA 70063  
Phone: 504-469-0136  
Fax: 504-910-0070  
sales@aertkerco.com  
www.aertkerco.com

### MAINE

UCI Sales Group, LLC.  
22 Whiteside St.  
Newington, CT 06111  
Phone: (860) 667-4766  
Fax: (860) 667-4766  
sales@ucisales.com

### MARYLAND - NORTHERN

Strategic Partners of PA, Inc.  
100 Fairview Dr.  
West Chester, PA 19382  
Phone: 610-459-2117  
Fax: 610-459-459-9140  
pwasr@comcast.net

### MARYLAND - SOUTHERN

Utility Service Agency, Inc.  
501 N. Main St.  
Wake Forest, NC 27587  
Phone: (919) 556-6131  
Fax: (919) 556-7984  
sales@utilityserviceagency.net  
www.utilityserviceagency.net

### MASSACHUSETTS

UCI Sales Group, LLC.  
22 Whiteside St.  
Newington, CT 06111  
Phone: (860) 667-4766  
Fax: (860) 667-4766  
sales@ucisales.com

### MICHIGAN

Utility Sales, Inc.  
930 E. Oak St., Suite 1  
Lake In The Hills, IL 60156  
Phone: (800) 253-6248  
Fax: (800) 498-8078  
info@utilitiesales.net  
www.utilitiesales.net

### MINNESOTA

Minnkota Sales  
Div. of Lee Noonan Co.  
2230 County Road H2  
Mounds View, MN 55112  
Phone: (763) 560-1228  
Fax: (763) 560-3282  
Steve@leenoonan.com

### MISSISSIPPI - NORTHERN

Aertker Company  
2412 Marietta Street  
Kenner, LA 70063  
Phone: 504-469-0136  
Fax: 504-910-0070  
sales@aertkerco.com  
www.aertkerco.com

### MISSISSIPPI - SOUTHERN

Tice & Associates, Inc.  
P.O. Box 1168  
Trussville, AL 35173  
Phone: 205-413-8920  
Fax: 205-413-8921  
terri@tice-associates.com  
www.tice-associates.com

### MISSOURI - EASTERN

Utility Sales, Inc.  
930 E. Oak St., Suite 1  
Lake In The Hills, IL 60156  
Phone: (800) 253-6248  
Fax: (800) 498-8078  
info@utilitiesales.net  
www.utilitiesales.net

### MISSOURI - WESTERN

Moehn Electrical Sales, Inc.  
6401 N. 90th Street  
Omaha, NE 68134-0817  
Phone: (402) 572-7875  
Fax: (402) 572-7845  
jmoehn@moehnsales.com  
www.moehnsales.com



# Huskie Tools Representative Directory

## MONTANA

Carlson Sales, Inc.  
9808 NE 126th Ave., Bldg. C  
Vancouver, WA 98682  
Phone: (360) 573-8203  
Fax: (360) 573-8289  
www.carlson-sales.com

## NEBRASKA

Moehn Electrical Sales, Inc.  
6401 N. 90th Street  
Omaha, NE 68134-0817  
Phone: (402) 572-7875  
Fax: (402) 572-7845  
jmoehn@moehnsales.com  
www.moehnsales.com

## NEVADA - NORTHERN

Isberg Nott Company  
4725 First St. Suite 256  
Pleasanton, CA 94566  
Phone: (925) 426-4718  
Fax: (925) 426-0323  
isberg-nott@isberg-nott.com

## NEVADA - SOUTHERN

Clark Power Products, Inc.  
16411 N. 90th St., Suite 108  
Scottsdale, AZ 85260  
Phone: (480) 661-8599  
Fax: (480) 614-0125  
sales@clarkpowerproducts.com

## NEW HAMPSHIRE

UCI Sales Group, LLC.  
22 Whiteside St.  
Newington, CT 06111  
Phone: (860) 667-4766  
Fax: (860) 667-4766 \*51  
sales@ucisales.com

## NEW JERSEY

RN Utility Sales, Inc.  
25 Progress St.  
Edison, NJ 08820  
Phone: (908) 561-4028  
Fax: (908) 561-4833  
sales@rnutilitiesales.com  
www.rnutilitiesales.com

## NEW MEXICO

Clark Power Products, Inc.  
16411 N. 90th St., Suite 108  
Scottsdale, AZ 85260  
Phone: (480) 661-8599  
Fax: (480) 614-0125  
sales@clarkpowerproducts.com

## NEW YORK - METROPOLITAN

RN Utility Sales, Inc.  
25 Progress St.  
Edison, NJ 08820  
Phone: (908) 561-4028  
Fax: (908) 561-4833  
sales@rnutilitiesales.com  
www.rnutilitiesales.com

## NEW YORK - UPSTATE

UCI Sales Group, LLC.  
179 David Road  
Rutland, VT 05701  
Phone: (802) 773-7380  
Fax: (802) 773-7380  
sales@ucisales.com  
www.ucisales.com

## NORTH CAROLINA

Utility Service Agency, Inc.  
501 N. Main St.  
Wake Forest, NC 27587-1169  
Phone: (919) 556-6131  
Fax: (919) 556-7984  
sales@utilityserviceagency.net  
www.utilityserviceagency.net

## NORTH DAKOTA

Minnkota Sales  
Div. of Lee Noonan Co.  
2230 County Road H2  
Mounds View, MN 55112  
Phone: (763) 560-1228  
Fax: (763) 560-3282  
Steve@leenoonan.com

## OHIO

Roynon Electrical Products Co.  
1021 E. Findlay St.  
P.O. Box 267  
Carey, OH 43316  
Phone: (800) 500-4009  
Fax: (419) 396-7619  
cassie@roynon.com  
www.roynon.com

## OKLAHOMA

Jones Power Products  
12969 Hunters Ridge  
Blanchard, OK 73010  
Phone: (405) 485-2019  
Fax: (405) 485-3484  
www.jonespowerproducts.com

## OREGON

Carlson Sales, Inc.  
9808 NE 126th Ave., Bldg. C  
Vancouver, WA 98682  
Phone: (360) 573-8203  
Fax: (360) 573-8289  
www.carlson-sales.com

## PENNSYLVANIA

Strategic Partners  
100 Fairview Dr., Unit 104B  
West Chester, PA 19382  
Phone: (610) 459-2117  
Fax: (610) 459-9140  
pwasmr@comcast.net  
www.sppa.biz

## RHODE ISLAND

UCI Sales Group, LLC.  
22 Whiteside St.  
Newington, CT 06111  
Phone: (860) 667-4766  
Fax: (860) 667-4766  
sales@ucisales.com

## SOUTH CAROLINA

Utility Service Agency, Inc.  
501 N. Main St.  
Wake Forest, NC 27587-1169  
Phone: (919) 556-6131  
Fax: (919) 556-7984  
sales@utilityserviceagency.net  
www.utilityserviceagency.net

## SOUTH DAKOTA

Minnkota Sales  
Div. of Lee Noonan Co.  
2230 County Road H2  
Mounds View, MN 55112  
Phone: (763) 560-1228  
Fax: (763) 560-3282  
Steve@leenoonan.com  
Jeff@leenoonan.com

## TENNESSEE - EASTERN & MIDDLE

Saver Sales  
121 Malabu Dr, Suite 9  
Lexington, KY 40503  
Phone: (859) 260-1944  
Fax: (859) 260-1844  
sales@saversales.com  
www.saversales.com

## TENNESSEE - WESTERN

Aertker Company  
2412 Marietta Street  
Kenner, LA 70063  
Phone: 504-469-0136  
Fax: 504-910-0070  
sales@aertkerco.com  
www.aertkerco.com

## TEXAS - NORTH

Utility Sales Agents of N. Texas  
12220 Ford Rd., Suite 110  
Dallas, TX 75234  
Phone: (972) 243-0977  
Fax: (972) 243-4579  
www.utilitysalesagents.com

## TEXAS - SOUTH

Wiltex Electrical Sales, Inc.  
9310 Campbell Rd.  
Houston, TX 77080  
Phone: (713) 464-4817  
Fax: (713) 465-4360  
www.wiltex.com

## TEXAS - EL PASO

Clark Power Products, Inc.  
16411 N. 90th St., Suite 108  
Scottsdale, AZ 85260  
Phone: (480) 661-8599  
Fax: (480) 614-0125  
sales@clarkpowerproducts.com

## UTAH

Carlson Sales, Inc.  
9808 NE 126th Ave., Bldg. C  
Vancouver, WA 98682  
Phone: (360) 573-8203  
Fax: (360) 573-8289  
www.carlson-sales.com

## VERMONT

UCI Sales Group, LLC.  
179 David Road  
Rutland, VT 05701  
Phone: (802) 773-7380  
Fax: (802) 773-7380  
sales@ucisales.com

## VIRGINIA

Utility Service Agency, Inc.  
501 N. Main St.  
Wake Forest, NC 27587-1169  
Phone: (919) 556-6131  
Fax: (919) 556-7984  
sales@utilityserviceagency.net  
www.utilityserviceagency.net

## WASHINGTON

Carlson Sales, Inc.  
9808 NE 126th Ave. Bldg. C  
Vancouver, WA 98682  
Phone: 360-573-8203  
Fax: 360-573-8289  
www.carlson-sales.com

## WEST VIRGINIA - NORTHERN

Strategic Partners  
100 Fairview Dr., Unit 104B  
West Chester, PA 19382  
Phone: (610) 459-2117  
Fax: (610) 459-9140  
pwasmr@comcast.net  
www.sppa.biz

## WEST VIRGINIA - SOUTHERN

Utility Service Agency, Inc.  
501 N. Main St.  
Wake Forest, NC 27587-1169  
Phone: (919) 556-6131  
Fax: (919) 556-7984  
sales@utilityserviceagency.net  
www.utilityserviceagency.net

## WISCONSIN

Utility Sales, Inc.  
930 E. Oak St., Suite 1  
Lake in the Hills, IL 60156  
Phone: (800) 253-6248  
Fax: (800) 498-8078  
info@utilitysales.net  
www.utilitysales.net

## WYOMING

Mountain States Utility Sales  
721 Gateway Avenue  
Fort Morgan, CO 80701  
Phone/Fax: (970) 867-3731  
sam@msutilitiesales.com





# Huskie Tools Representative Directory

## CANADA

### ALBERTA - NWT - YUKON

LineStar Utility Supply  
#1-1381 Hastings Crescent S.E.  
Calgary, AB T2G 4C8  
Phone: (403) 243-1900  
Fax: (403) 243-2063  
salesab@linestar.ca  
www.linstar.ca

### BRITISH COLUMBIA

LineStar Utility Supply  
Unit #4, 8125 130 Street  
Surrey, BC V3W 7X4  
Phone: (604) 594-2701  
Fax: (604) 594-2751  
sales@linestar.ca  
www.linstar.ca

### NOVA SCOTIA

Harris & Roome Supply  
Division of Graybar Canada  
260 Brownlow Avenue  
Dartmouth, NS B2Y 3Z6  
Phone: (902) 456-0114  
Fax: (902) 468-3995  
gbarron@graybarcanada.com

### NEWFOUNDLAND

Harris & Roome Supply  
Division of Graybar Canada  
47 Pippy Place  
St. John's, NF A1B 3T1  
Phone: (709) 722-6161  
Fax: (709) 722-8886  
pbragg@graybarcanada.com

### NEW BRUNSWICK & PRINCE EDWARD ISLAND

Harris & Roome Supply  
Division of Graybar Canada  
668 Prospect Street  
Fredericton, NB E3B 6G9  
Phone: (506) 458-8265  
Fax: (506) 452-9753  
bgammon@graybarcanada.com

### ONTARIO

PEFCO Ontario  
1734 Finch Avenue  
Pickering, Ontario L1V 1K4  
Phone: (905) 427-9294  
Fax: (905) 427-0540  
jmasonpefco@sympatico.ca

### QUEBEC

Innova Inc.  
1129-1 Roberval Sud  
Granby, QC J2G 8C8  
Phone: (800) 461-1937  
Fax: (450) 372-9936  
charlene.dover@innova2000.ca

### SASKATCHEWAN & MANITOBA

Prairie Central Line Supply Ltd.  
1258 Border St.  
Winnipeg, MB R3H 0M6  
Phone: (204) 633-1804  
Toll Free: 800-701-4441  
Fax: (204) 633-1183  
sales@pclsupply.mb.ca

## MEXICO

### TAMPICO

Equipos Electricos Para Alta Tension  
AV. Hidalgo #2006-2  
Col. Altavista C.P.  
Tampico, TAM, Mexico 89240  
Phone: (1) 213-41-94  
Fax: (1) 213-37-12  
luis\_stiles@eepat.com  
www.eepat.com

## LATIN AMERICA & CARIBBEAN

Consult Factory  
Huskie Tools  
800-860-6170  
richter@huskietools.com

# Authorized Service Centers

## UNITED STATES

### COLORADO

Q.U.E.S.T Inc.  
812 Baseline Place #4  
Brighton, CO 80601  
Phone: (720) 685-9091  
Fax: (720) 655-8143

### ILLINOIS

Huskie Tools, Inc.  
198 N. Brandon Dr.  
Glendale Heights, IL 60139  
Phone: (800) 860-6170  
Fax: (800) 345-3767

### MASSACHUSETTS

Hydron Inc.  
273 Weymouth St.  
Rockland, MA 02370  
Phone: (781) 871-1920  
Fax: (781) 878-1507

### MINNESOTA

Total Tool Supply, Inc.  
315 N. Pierce St.  
St. Paul, MN 55104  
Phone: (651) 646-4055  
Fax: (651) 646-8610

### NEW JERSEY (METRO)

Metro Hydraulic Jack Co.  
1271 McCarter Hwy.  
Newark, NJ 07104  
Phone: (973) 350-0111  
Fax: (973) 350-0112

### NEW YORK - UPSTATE

Linemen's Supply, Inc.  
30 Travis Ave.  
Binghamton, NY 13904  
Phone: (607) 773-2405  
Fax: (607) 773-2414

### NEW YORK - METROPOLITAN

New Draulic Tools, Inc.  
796 E. 140th Street  
Bronx, NY 10454  
Phone: (718) 292-0680  
Fax: (718) 993-3376  
(888) 237-3962  
www.newdraulictools.com

### VIRGINIA

Special Fleet  
2500 S. Main St.  
Harrisonburg, VA 22801  
Phone: (800) 796-9027  
Fax: (540) 438-9502  
www.specialfleet.com

### WASHINGTON

Rohlinger Enterprises, Inc.  
18832 Division  
P.O. Box 1340  
Suquamish, WA 98392  
Phone: (360) 598-4287  
Fax: (360) 598-6166

## CANADA

### ALBERTA - NWT - YUKON

LineStar Utility Supply  
#1-1381 Hastings Crescent S.E.  
Calgary, AB T2G 4C8  
Phone: (403) 243-1900  
Fax: (403) 243-2063  
salesab@linestar.ca  
www.linstar.ca

### BRITISH COLUMBIA

LineStar Utility Supply  
Unit #4, 8125 130 Street  
Surrey, BC V3W 7X4  
Phone: (604) 594-2701  
Fax: (604) 594-2751  
sales@linestar.ca  
www.linstar.ca

### ONTARIO

PEFCO Ontario  
1734 Finch Avenue  
Pickering, Ontario L1V 1K4  
Phone: (905) 427-9294  
Fax: (905) 427-0540  
jmasonpefco@sympatico.ca

### QUEBEC

Innova  
1129-1 Roberval Sud  
Granby, QC J2G 8C8  
Phone: (800) 461-1937  
Fax: (450) 372-9936  
charlene.dover@innova2000.ca

### SASKATCHEWAN & MANITOBA

Prairie Central Line Supply Ltd.  
1258 Border St.  
Winnipeg, MB R3H 0M6  
Phone: (204) 633-1804  
Toll Free: 800-701-4441  
Fax: (204) 633-1183  
sales@pclsupply.mb.ca

## MEXICO

Equipos Electricos Para Alta Tension  
AV. Hidalgo #2006-2  
Col. Altavista C.P.  
Tampico, TAM, Mexico 89240  
Phone: (1) 213-41-94  
Fax: (1) 213-37-12



# Index

## Symbols

25CAT .....	21,93
360° .....	98

## A

AC Charger.....	49
ACSR Cutting Guide.....	96
AS-025 .....	80
AS-118.....	80
Authorized Service Centers .....	109

## B

Battery .....	48
BP-80 .....	48

## C

Cable Stripper .....	80
Charger.....	49
CH-90 .....	49
CN-58H .....	56
CN-258 .....	53
Compression Tool Selection Guide .....	95
Cutting Tool Selection Guide .....	95

## D

DA-12 .....	79
DC Charger .....	49
Die Cases	
DIE-CASE .....	69
HTK-CASE .....	69
W-CASE.....	69
Die Chart .....	68
Dies .....	64

## E

ECO-EZ .....	18
ECO-EZHBAG .....	94
ECO-L90.....	92
EP-60D .....	62
EP-60DT .....	62
EP-60W .....	61
EP-60WT .....	61-62
EP-100WC .....	63
EP-200WA .....	63
EP-410 .....	54
EP-410H.....	58
EP-410HT .....	58
EP-430 .....	55
EP-430H.....	59
EP-510C.....	55
EP-510HC.....	59
EP-510HK .....	60
EP-510K .....	56

EP-610H.....	60
EP-630A .....	53
EP-630HA .....	57
EP-750A .....	54
EP-750HA .....	57
EZ-97 .....	18
EZ-HLSTR.....	92

## F

Foot Pump.....	83
Foot Switch.....	88
FP-700 .....	83

## G

Gauges .....	70
PG-1 .....	70
PG-4 .....	70
PG-15 .....	70
PG-58 .....	70
PG-610A.....	70
PG-ND .....	70
PG-SL .....	70

## H

HA60-SERIES.....	67
HA100-SERIES.....	67
Handheld Hydraulic Cutters .....	75
Holster.....	92
Hose .....	89
HP-700.....	83
HPG-4 .....	85
HT41-SERIES .....	65
HT58-SERIES .....	64
HT61-SERIES .....	66
HTK-CASE .....	69
HTK-SERIES .....	66
HT-SERIES .....	64
Huskie Holster .....	92
Huskie Representative Directory .....	107-109
Hydraulic Compression .....	52
Hydraulic Compression Tools.....	51
Hydraulic & Manual Cutting Tools.....	71, 72
Hydraulic Oil.....	90
Hydraulic Operated Remote Cutting Heads .....	76
Hydraulic Pumps & Punches.....	81-82

## I

Insulation Stripper .....	80
---------------------------	----

## L

Light .....	92
Lithium-Ion Battery .....	48

## N

# Index

NC-SERIES.....	89
NP-400 .....	80

## O

Oil, Hydraulic.....	90
Order Data .....	10

## P

PG-1 .....	70
PG-4 .....	70
PG-15 .....	70
PG-58 .....	70
PG-610 .....	70
PG-610A.....	70
PG-ND .....	70
PG-SL .....	70
PU-15 .....	93
Punch .....	87

## R

R-14EA.....	84
R-14EAD.....	85
R-14EF .....	84
R-750C.....	73
Ratchet Cable Cutter.....	73
RC-5 .....	85
REC-5NDSL .....	22
REC-50U .....	38
REC-54ACM .....	39
REC-54M .....	40
REC-530Y .....	34
REC-534YC.....	35
REC-558U .....	21
REC-560YC.....	36
REC-585YC.....	37
REC-3410 .....	26
REC-3510.....	28
REC-3510K .....	30
REC-3610.....	32
REC-5430.....	27
REC-5510.....	29
REC-5510K .....	31
REC-5630.....	24
REC-5750.....	25
REC-CN558 .....	23
REC-P1 .....	47, 86
REC-P1CASE .....	94
REC-S520.....	42
REC-S524CC .....	44
REC-S524H.....	43
REC-S540.....	45
REC-S3550.....	46
REC-SB .....	33
REC-Y33 .....	41
Remote Control Handle.....	88
Remote Cutting Heads.....	76

Replacement Blades	
20-07 .....	42
24-08 .....	43
24C-08.....	44
40-14 .....	45
55A-10.....	46
RI-500 .....	73

## S

S-16 .....	75
S-20 .....	75
S-32 .....	75
S-32CC .....	75
S-40B .....	75
S-55 .....	75
S-85 .....	75
S-240 .....	75
S-240CC .....	75
SC-SERIES .....	89
SH-70M .....	87
SL-630 .....	14
SL-750 .....	15
SL-CB .....	16
SL-HLSTR.....	92
SL-ND .....	13
SL-S20.....	17
SP-20 .....	77
SP-24 .....	77
SP-24CC .....	77
SP-32 .....	77
SP-32CC1 .....	77
SP-35 .....	77
SP-40 .....	77
SP-55 .....	77
SP-85 .....	77
SP-100 .....	77
SP-SERIES.....	76-77
S-SERIES .....	74-75

## T

Titanium.....	62
Tri-Chemistry Charger.....	49

## U

UDK-1 .....	93
URH-14 .....	88

## W

Warranty .....	6
W-CASE.....	69
Wire Rope Dies.....	69

## Y

YSP-Series.....	78
-----------------	----





# Huskie Tools Ambassadors



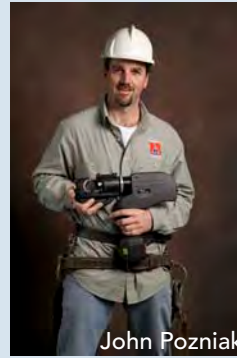
Bill Adrian



James Chapman



Dennis Liebelt



John Pozniak



Harry Cottrill



Joe Campbell



Steve Long



Richard Jurey



Clyde Legg



Dennis McClellan



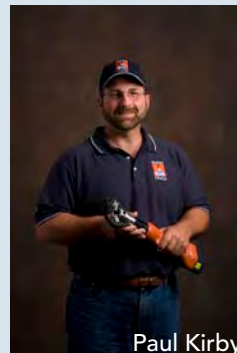
Burt Duncan



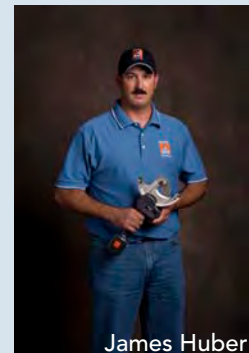
Jesse Simmons



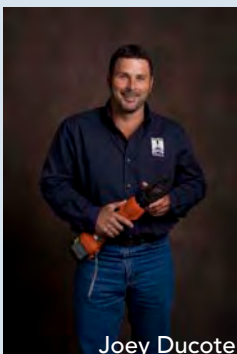
Jim Evard



Paul Kirby



James Huber



Joey Ducote



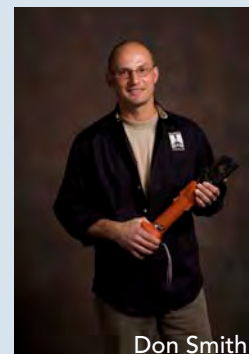
Cory Hightower



Jason Langworthy



Al Withers



Don Smith



Richard Sanders



Neal Walker



Bruce Oakes

## *Thank You!*

There's no such thing as compromise for experienced linemen.

They don't know the meaning of the word "quit" and there's no "halfway done". They take pride in their work.

They are the best of the best, and that's why Huskie Tools has chosen these individuals as Ambassadors.







Over the past 35 years, Huskie Tools has built one of the industry's most respected and successful businesses. We owe our success in large part to our single-minded focus on designing the highest quality hydraulic compression and cutting tools on the market today.

While Huskie Tools services clients worldwide across a myriad of industries, we have a common bond with each. It's our absolute commitment to building integrated and lasting customer relationships. Our continuing mission is to understand how our product improvements can increase productivity through better ergonomics, while reducing worksite injuries and accidents. For us, there can be no higher goal.

The catalog you hold represents our state-of-the-art in handheld, lightweight and fully portable tools. These are customer-centered products designed in part with the aid of our customers' input. And each tool is designed to deliver precision performance and meet the specific needs of the ever-changing industries it serves.

These aren't just any tools — they're tools that define careers. Today, tomorrow and into the future, you'll count on us to be there for you — in any emergency, ready to assist with superior products, unparalleled expertise and dedicated service. We wouldn't have it any other way.



**Huskie**  
**TOOLS**

198 N. Brandon Drive  
Glendale Heights, IL 60139  
(800) 860-6170 • Fax: (800) 345-3767  
[www.huskietools.com](http://www.huskietools.com)